

Recombinant Human PLA2R1 protein, His & T7-tagged

Cat. No. PLA2R1-1026H Lot. No. (See product label)

SPECIFICATION

Product Overview	Recombinant Human PLA2R1 aa. (Tyr385~Cys643 (Accession # B7ZML4) fused with N-terminal His & T7 tag was produced in E. coli cells.
Species	Human
Source	E.coli
ProteinLength	Tyr385~Cys643
Description	<p>This gene represents a phospholipase A2 receptor. The encoded protein likely exists as both a transmembrane form and a soluble form. The transmembrane receptor may play a role in clearance of phospholipase A2, thereby inhibiting its action.</p> <p>Polymorphisms at this locus have been associated with susceptibility to idiopathic membranous nephropathy. Alternatively spliced transcript variants encoding different isoforms have been identified.</p>
Form	Freeze-dried powder
Molecular Mass	Predicted Molecular Mass: 33.6kDa.
Endotoxin	<1.0EU per 1g (determined by the LAL method)
Purity	>95%
Characteristic	The isoelectric point is 6.8.

 Tel: 1-631-559-9269 1-516-512-3133

 Email: info@creative-biomart.com  Fax: 1-631-938-8127

 45-1 Ramsey Road, Shirley, NY 11967, USA

Applications	SDS-PAGE; WB; ELISA; IP.
Stability	The thermal stability is described by the loss rate of the target protein. The loss rate was determined by accelerated thermal degradation test, that is, incubate the protein at 37°C for 48h, and no obvious degradation and precipitation were observed. (Referring from China Biological Products Standard, which was calculated by the Arrhenius equation.) The loss of this protein is less than 5% within the expiration date under appropriate storage condition.
Storage	Avoid repeated freeze/thaw cycles. Store at 2-8°C for one month. Aliquot and store at -80°C for 12 months.
Storage buffer	Supplied as lyophilized form in 20mM Tris, 150mM NaCl, pH8.0, containing 1mM EDTA, 1mM DTT, 0.01% sarcosyl, 5% trehalose, and preservative.
Reconstitution	Reconstitute in ddH ₂ O.

GENE INFORMATION

Gene Name	PLA2R1 phospholipase A2 receptor 1 [Homo sapiens (human)]
Official Symbol	PLA2R1
Synonyms	PLA2R1; phospholipase A2 receptor 1; PLA2R; PLA2-R; PLA2IR; CLEC13C; PLA2G1R; secretory phospholipase A2 receptor; 180 kDa secretory phospholipase A2 receptor; C-type lectin domain family 13 member C; M-type receptor; phospholipase A2 receptor 1, 180kD; phospholipase A2 receptor 1, 180kDa
Gene ID	22925
mRNA Refseq	NM_001195641.1

 Tel: 1-631-559-9269 1-516-512-3133

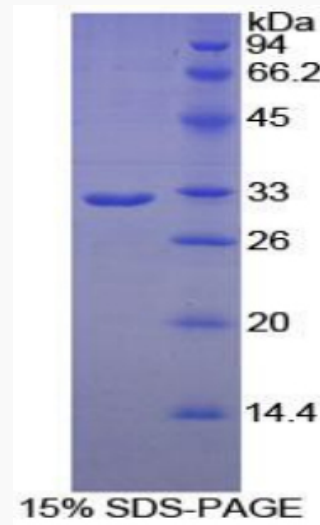
 Email: info@creative-biomart.com  Fax: 1-631-938-8127

 45-1 Ramsey Road, Shirley, NY 11967, USA

Protein Refseq NP_001182570.1

UniProt ID B7ZML4

SDS-PAGE



 Tel: 1-631-559-9269 1-516-512-3133

 Email: info@creative-biomart.com  Fax: 1-631-938-8127

 45-1 Ramsey Road, Shirley, NY 11967, USA