

# Recombinant Human PLA2R1 Protein (395-530 aa), His-tagged

Cat. No. PLA2R1-1661H Lot. No. (See product label)

## SPECIFICATION

**Product Overview** Recombinant Human PLA2R1 Protein (395-530 aa) is produced by Yeast expression system. This protein is fused with a 6xHis tag at the N-terminal. Research Area: Cardiovascular. Protein Description: Partial.

**Species** Human

**Source** Yeast

**ProteinLength** 395-530 aa

**Description** Receptor for secretory phospholipase A2 (sPLA2). Acts as a receptor for phospholipase sPLA2-IB/PLA2G1B but not sPLA2-IIA/PLA2G2A. Also able to bind to snake PA2-like toxins. Although its precise function remains unclear, binding of sPLA2 to its receptor participates in both positive and negative regulation of sPLA2 functions as well as clearance of sPLA2. Binding of sPLA2-IB/PLA2G1B induces various effects depending on the cell type, such as activation of the mitogen-activated protein kinase (MAPK) cascade to induce cell proliferation, the production of lipid mediators, selective release of arachidonic acid in bone marrow-derived mast cells. In neutrophils, binding of sPLA2-IB/PLA2G1B can activate p38 MAPK to stimulate elastase release and cell adhesion. May be involved in responses in proinflammatory cytokine productions during endotoxic shock. Also has endocytic properties and rapidly internalizes sPLA2 ligands, which is particularly important for the clearance of Extracellular domain sPLA2s to protect their potent enzymatic activities. The soluble secretory phospholipase A2 receptor form is circulating and acts as a negative

 Tel: 1-631-559-9269 1-516-512-3133

 Email: [info@creative-biomart.com](mailto:info@creative-biomart.com)  Fax: 1-631-938-8127

 45-1 Ramsey Road, Shirley, NY 11967, USA

	regulator of sPLA2 functions by blocking the biological functions of sPLA2-IB/PLA2G1B.
<b>Form</b>	Tris-based buffer,50% glycerol
<b>Molecular Mass</b>	17.4 kDa
<b>AA Sequence</b>	EEKTWHEALRSCQADNSALIDITSLAEVEFLVTLGDNASETWIGLSSNKIPVSFEW SNDSSVIFTNWHTLEPHIFPNRSQLCVSAEQSEGHWKVKNCEERLFYICKKAGHVLS DAESGCQEGWERHGGFCYKID
<b>Purity</b>	> 90% as determined by SDS-PAGE.
<b>Notes</b>	Repeated freezing and thawing is not recommended. Store working aliquots at 4 centigrade for up to one week.
<b>Storage</b>	The shelf life is related to many factors, storage state, buffer ingredients, storage temperature and the stability of the protein itself. Generally, the shelf life of liquid form is 6 months at -20 centigrade/-80 centigrade. The shelf life of lyophilized form is 12 months at -20 centigrade/-80 centigrade.
<b>Concentration</b>	A hardcopy of COA with reconstitution instruction is sent along with the products.

## GENE INFORMATION

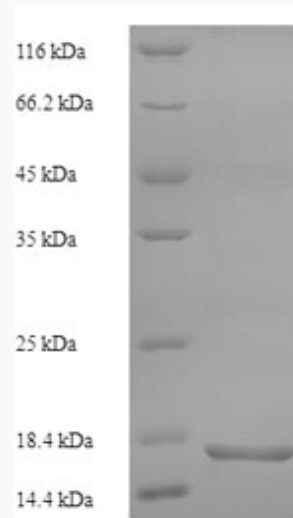
<b>Gene Name</b>	PLA2R1 phospholipase A2 receptor 1, 180kDa [ Homo sapiens ]
<b>Official Symbol</b>	PLA2R1
<b>Synonyms</b>	PLA2R; PLA2-R; PLA2IR; CLEC13C; PLA2G1R;

 Tel: 1-631-559-9269 1-516-512-3133

 Email: [info@creative-biomart.com](mailto:info@creative-biomart.com)  Fax: 1-631-938-8127

 45-1 Ramsey Road, Shirley, NY 11967, USA

Gene ID	22925
mRNA Refseq	NM_007366.4
Protein Refseq	NP_031392.3
MIM	604939
UniProt ID	Q13018



(Tris-Glycine gel) Discontinuous SDS-PAGE (reduced) with 5% enrichment gel and 15% separation gel.

Tel: 1-631-559-9269 1-516-512-3133

Email: [info@creative-biomart.com](mailto:info@creative-biomart.com) Fax: 1-631-938-8127

45-1 Ramsey Road, Shirley, NY 11967, USA