

# Recombinant Human PLA2R1 Protein (Tyr385-Cys643), N-His tagged

**Cat. No.** PLA2R1-4130H    **Lot. No.** (See product label)

## SPECIFICATION

<b>Product Overview</b>	Recombinant human PLA2R1 (Tyr385-Cys643) fused with the N-His tag was expressed in E. coli.
<b>Species</b>	Human
<b>Source</b>	E.coli
<b>ProteinLength</b>	Tyr385-Cys643
<b>Form</b>	Lyophilized powder/frozen liquid
<b>Molecular Mass</b>	32.12 kDa
<b>Purity</b>	>90% as determined by SDS-PAGE.
<b>Notes</b>	For research use only.
<b>Storage</b>	Use a manual defrost freezer and avoid repeated freeze thaw cycles. Store at 2 to 8 centigrade for one week. Store at -20 to -80 centigrade for twelve months from the date of receipt.
<b>Storage Buffer</b>	0.01M PBS, pH 7.4, 0.02% NLS
<b>Reconstitution</b>	Reconstitute in sterile water for a stock solution.

 Tel: 1-631-559-9269    1-516-512-3133

 Email: [info@creative-biomart.com](mailto:info@creative-biomart.com)     Fax: 1-631-938-8127

 45-1 Ramsey Road, Shirley, NY 11967, USA

**Shipping**

They are shipped out with dry ice/blue ice unless customers require otherwise.

**GENE INFORMATION**

**Gene Name** PLA2R1 phospholipase A2 receptor 1, 180kDa [ Homo sapiens (human) ]

**Official Symbol** PLA2R1

**Synonyms** PLA2R; PLA2-R; PLA2IR; CLEC13C; PLA2G1R

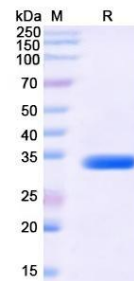
**Gene ID** 22925

**mRNA Refseq** NM\_007366

**Protein Refseq** NP\_031392

**MIM** 604939

**UniProt ID** Q13018

**SDS-PAGE**


 Tel: 1-631-559-9269 1-516-512-3133

 Email: [info@creative-biomart.com](mailto:info@creative-biomart.com)  Fax: 1-631-938-8127

 45-1 Ramsey Road, Shirley, NY 11967, USA