

# Recombinant Human PLA2R1 Protein, Myc/DDK-tagged, C13 and N15-labeled

**Cat. No.** PLA2R1-5581H    **Lot. No.** (See product label)

## SPECIFICATION

<b>Product Overview</b>	PLA2R1 MS Standard C13 and N15-labeled recombinant protein (NP_001007268) with a C-terminal MYC/DDK tag, was expressed in HEK293 cells.
<b>Species</b>	Human
<b>Source</b>	HEK293
<b>Description</b>	<p>This gene represents a phospholipase A2 receptor. The encoded protein likely exists as both a transmembrane form and a soluble form. The transmembrane receptor may play a role in clearance of phospholipase A2, thereby inhibiting its action.</p> <p>Polymorphisms at this locus have been associated with susceptibility to idiopathic membranous nephropathy. Alternatively spliced transcript variants encoding different isoforms have been identified.</p>
<b>Molecular Mass</b>	152.81 kDa
<b>AA Sequence</b>	<pre> MLLSPSLLLLLLLLGAPRGCAEGVAAALTPERLLEWQDKGIFVIQSESLKKCIQAGKSV LTLENCKQANKHMLWKVWSNHGLFNIGGSGCLGLNFSAPEQPLSLYECDSTLVSLR WRCNRKMITGPLQYSVQVAHDNTVVASRKYIHKWISYGSGGGDICEYLHKDLHTIKG NTHGMPCMFQYQNHQWHHECTREGREDDLLWCATTSRYERDEKWGFCDPTS AEVGCDTIWEKDLNSHICYQFNLLSSLWSSEAHSSCQMQLGGTLLSITDETEENFIRE HMSSKTVEVWMGLNQLDEHAGWQWSDGTPNLNLSPEVNFEPFVEDHCGTFSS FMPSAWRSRDCESTLPYICKKYLNHIDHEIVEKDAWKYYATHCEPGWNPYNRNCYK           </pre>

 Tel: 1-631-559-9269    1-516-512-3133

 Email: [info@creative-biomart.com](mailto:info@creative-biomart.com)     Fax: 1-631-938-8127

 45-1 Ramsey Road, Shirley, NY 11967, USA

LQKEEKTWHEALRSCQADNSALIDITSLAEVEFLVTLLGDENASETWIGLSSNKIPVS  
 FEWSNDSSVIFTNWHTLEPHIFPNRSQLCVSAEQSEGHWKVKNCEERLFYICKKAG  
 HVLSDAESGCQEGWERHGGFCYKIDTVLRSFDQASSGYCPPALVTITNRFEQAFIT  
 SLISSVVKMKDSYFWIALQDQNDTGEYTWKPVGQKPEPVQYTHWNTHQPRYSGGC  
 VAMRGRHPLGRWEVKHCRHFKAMSLCKQPVENQEKAEEERWPFHPCYLDWESE  
 PGLASCFKVFHSEKVLKRTWREAEAFCEEFGAHLASFHIEEENFVNELLHSKFN  
 WTEERQFWIGFNKRNPLNAGSWEWSDRTPVVSSFLDNTYFGEDARNCAVYKANKT  
 LLPLHCGSKREWICKIPRDVVKIPFWYQYDVPWLFYQDAEYLFHTFASEWLNFEFV  
 CSWLHSDLLTIHSAHEQEFIHKIKALSKYGASWWIGLQEERANDEFWRDGTPIY  
 QNWDGTRERTVNNQSQRGFISSITGLWGSEECVSMPSICKRKKVWLIEKKKDTP  
 KQHGTCPKGWLYFNYKCLLLNIPKDPSSWKNWTHAQHFCAEEGGTLVAIESEVEQA  
 FITMNLFGQTTSVWIGLQNDYETWLNKGPVVYSNWSPFDIINIPSHNTTEVQKHIPL  
 CALLSSNPNFHFTGKWYFEDCGKEGYGFVCEKMQDTSGHGVNTSDMYPMPNTLE  
 YGNRTYKIINANMTWYAAIKTCLMHKAQLVSITDQYHQSFLT VVLNRLGYAHWIGLFT  
 TDNGLNFDWSDGTKSSFTFWKDEESSLLGDCVFADSNRWHSTACESFLQGAICH  
 VPPETRQSEHPELCSSETSIPWIKFKSNCSYFSSTVLDSMSFEAAHEFCKKEGSNLLTIK  
 DEAFENAFLEELFAFGSSVQMVWLNAQFDGNSKTRTRPLEQKLISEEDLAANDILDY  
 KDDDDKV

**Purity** > 80% as determined by SDS-PAGE and Coomassie blue staining

**Stability** Stable for 3 months from receipt of products under proper storage and handling conditions.


**Storage** Store at -80 centigrade. Avoid repeated freeze-thaw cycles.

**Concentration** 50 µg/mL as determined by BCA

**Storage Buffer** 100 mM glycine, 25 mM Tris-HCl, pH 7.3.

 Tel: 1-631-559-9269 1-516-512-3133

 Email: [info@creative-biomart.com](mailto:info@creative-biomart.com)  Fax: 1-631-938-8127

 45-1 Ramsey Road, Shirley, NY 11967, USA

## GENE INFORMATION

**Gene Name** PLA2R1 phospholipase A2 receptor 1 [ Homo sapiens (human) ]

**Official Symbol** PLA2R1

**Synonyms** PLA2R; PLA2-R; PLA2IR; CLEC13C; PLA2G1R

**Gene ID** 22925

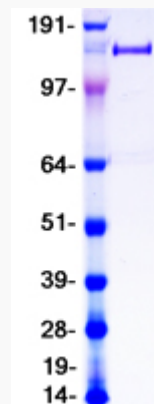
**mRNA Refseq** NM\_001007267

**Protein Refseq** NP\_001007268

**MIM** 604939

**UniProt ID** Q13018

### SDS-PAGE



 Tel: 1-631-559-9269 1-516-512-3133

 Email: [info@creative-biomart.com](mailto:info@creative-biomart.com)  Fax: 1-631-938-8127

 45-1 Ramsey Road, Shirley, NY 11967, USA