

Recombinant Human PLA2R1 protein, His&Myc-tagged

Cat. No. PLA2R1-5903H Lot. No. (See product label)

SPECIFICATION

Product Overview	Recombinant Human PLA2R1 protein(Q13018)(395-530aa), fused to N-terminal His tag and C-terminal Myc tag, was expressed in Insect cell.
Species	Human
Source	Insect Cells
ProteinLength	395-530aa
Form	If the delivery form is liquid, the default storage buffer is Tris/PBS-based buffer, 5%-50% glycerol. If the delivery form is lyophilized powder, the buffer before lyophilization is Tris/PBS-based buffer, 6% Trehalose, pH 8.0.
Molecular Mass	19.3 kDa
Purity	Greater than 85% as determined by SDS-PAGE.
Storage	Store at -20°C/-203°C upon receipt, aliquoting is necessary for mutiple use. Avoid repeated freeze-thaw cycles.
Reconstitution	Please reconstitute protein in deionized sterile water to a concentration of 0.1-1.0 mg/mL. We recommend to add 5-50% of glycerol (final concentration) and aliquot for long-term storage at -20°C/-80°C. Our default final concentration of glycerol is 173%.

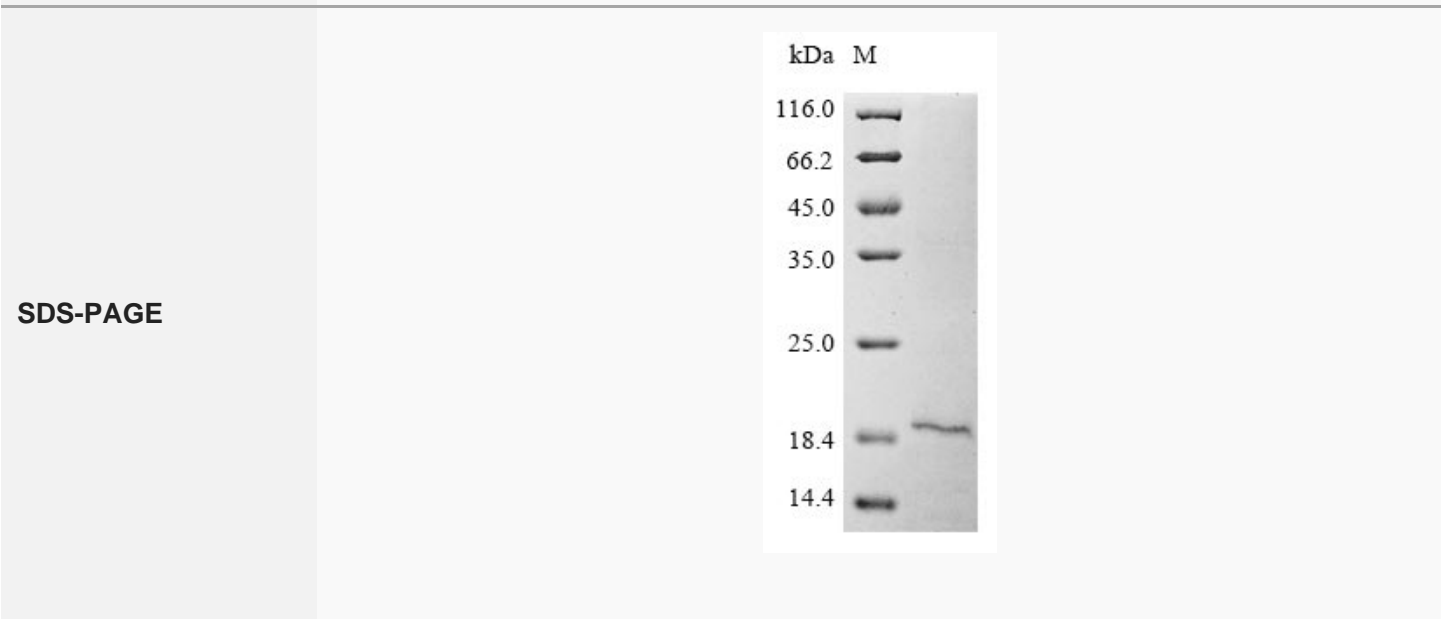
GENE INFORMATION

 Tel: 1-631-559-9269 1-516-512-3133

 Email: info@creative-biomart.com  Fax: 1-631-938-8127

 45-1 Ramsey Road, Shirley, NY 11967, USA

Gene Name	PLA2R1 phospholipase A2 receptor 1, 180kDa [Homo sapiens]
Official Symbol	PLA2R1
Synonyms	PLA2R; PLA2-R; PLA2IR; CLEC13C; PLA2G1R
Gene ID	22925
mRNA Refseq	NM_007366.4
Protein Refseq	NP_031392.3
MIM	604939
UniProt ID	Q13018



Tel: 1-631-559-9269 1-516-512-3133

Email: info@creative-biomart.com Fax: 1-631-938-8127

45-1 Ramsey Road, Shirley, NY 11967, USA