

## Recombinant Human PLAC1 Protein

**Cat. No.** PLAC1-07H    **Lot. No.** (See product label)

### SPECIFICATION

<b>Product Overview</b>	Recombinant Human PLAC1 Protein was expressed in E. coli.
<b>Species</b>	Human
<b>Source</b>	E.coli
<b>ProteinLength</b>	23-212aa
<b>Description</b>	Involved in placenta development. Predicted to be located in extracellular region.
<b>Form</b>	Liquid. In 50mM Tris-HCl, 150mM NaCl, pH 8.0.
<b>Molecular Mass</b>	~21.3 kDa
<b>AA Sequence</b>	QSPMTVLCSIDWFMVTVHPFMLNNDVCFHFELHLGLGCPPNHVQPHAYQFTYRV TECGIRAKAVSQDMVIYSTEIHYSSKGTSPKFVIPVSCAAPQKSPWLTKPCSMRVAS KSRATAQKDEKCYEVFSLSQSSQRPNCDCPPCVFSEEEHTQVPCHQAGAQAQPL QPSHFLDISEDWSLHTDDMIGSM
<b>Purity</b>	>90%
<b>Storage</b>	Short Term Storage at 4 centigrade, Long Term, please prepare aliquots with 20% glycerol and store at -20 to -80 centigrade. Avoid freeze/thaw cycles.
<b>Concentration</b>	0.42 mg/ml

 Tel: 1-631-559-9269    1-516-512-3133

 Email: [info@creative-biomart.com](mailto:info@creative-biomart.com)     Fax: 1-631-938-8127

 45-1 Ramsey Road, Shirley, NY 11967, USA

**Official Full Name** Placenta enriched 1

## GENE INFORMATION

**Gene Name** [PLAC1 placenta enriched 1 \[ Homo sapiens \(human\) \]](#)

**Official Symbol** [PLAC1](#)

**Synonyms** CT92; OOSP2B; OOSP2L

**Gene ID** [10761](#)

**mRNA Refseq** [NM\\_001316887](#)

**Protein Refseq** [NP\\_001303816](#)

**MIM** [300296](#)

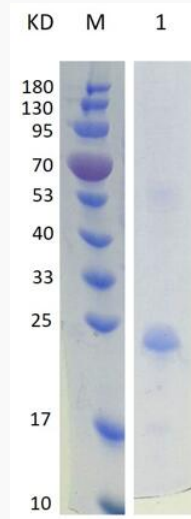
**UniProt ID** [Q9HBJ0](#)

 Tel: 1-631-559-9269 1-516-512-3133

 Email: [info@creative-biomart.com](mailto:info@creative-biomart.com)  Fax: 1-631-938-8127

 45-1 Ramsey Road, Shirley, NY 11967, USA

**SDS-PAGE**



15% SDS-PAGE analysis profiles of purified PLAC1 (23-212aa) (CBB stained).

 Tel: 1-631-559-9269 1-516-512-3133

 Email: [info@creative-biomart.com](mailto:info@creative-biomart.com)  Fax: 1-631-938-8127

 45-1 Ramsey Road, Shirley, NY 11967, USA