

Recombinant Human PLAT protein, hFc-tagged

Cat. No. PLAT-72H Lot. No. (See product label)

SPECIFICATION

Product Overview	Recombinant Human PLAT protein(Ile 311-Pro 562)(NP_000921.1) was expressed in HEK293 with the fused Fc region of human IgG1 at the N-terminus.
Species	Human
Source	HEK293
ProteinLength	311-562 aa
Form	Lyophilized from sterile 100mM Glycine, 10mM NaCl, 50mM Tris, pH 7.5.
Molecular Mass	The recombinant human Fc/tPA β is a disulfide-linked homodimeric protein. The reduced monomer consists of 489 amino acids and has a predicted molecular mass of 54.8 kDa. As a result of glycosylation, the apparent molecular mass of rh Fc/tPA β monomer is approximately 60-65 kDa in SDS-PAGE under reducing conditions.
Endotoxin	< 1.0 EU per μ g of the protein as determined by the LAL method.
Purity	> 95 % as determined by SDS-PAGE
Storage	Store it under sterile conditions at -20°C to -80°C upon receiving. Recommend to aliquot the protein into smaller quantities for optimal storage. Avoid repeated freeze-thaw cycles.
Reconstitution	It is recommended that sterile water be added to the vial to prepare a stock solution of

 Tel: 1-631-559-9269 1-516-512-3133

 Email: info@creative-biomart.com  Fax: 1-631-938-8127

 45-1 Ramsey Road, Shirley, NY 11967, USA

0.2 ug/ul. Centrifuge the vial at 4°C before opening to recover the entire contents.

GENE INFORMATION

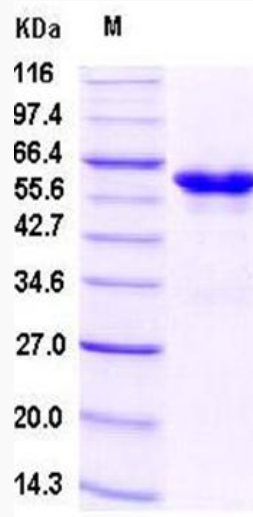
Gene Name	PLAT plasminogen activator, tissue [Homo sapiens]
Official Symbol	PLAT
Synonyms	PLAT; plasminogen activator, tissue; tissue-type plasminogen activator; alteplase; reteplase; t-plasminogen activator; plasminogen activator, tissue type; tissue plasminogen activator (t-PA); TPA; T-PA; DKFZp686I03148;
Gene ID	5327
mRNA Refseq	NM_000930
Protein Refseq	NP_000921
MIM	173370
UniProt ID	P00750

 Tel: 1-631-559-9269 1-516-512-3133

 Email: info@creative-biomart.com  Fax: 1-631-938-8127

 45-1 Ramsey Road, Shirley, NY 11967, USA

SDS-PAGE



 Tel: 1-631-559-9269 1-516-512-3133

 Email: info@creative-biomart.com  Fax: 1-631-938-8127

 45-1 Ramsey Road, Shirley, NY 11967, USA