

## Recombinant Human PLAT protein, hFc-tagged

Cat. No. PLAT-8525H Lot. No. (See product label)

### SPECIFICATION

|                         |   |
|-------------------------|---|
| <b>Product Overview</b> | Recombinant Human PLAT protein(Tyr 37-Arg 310)(NP_000921.1) was expressed in HEK293, with the fused Fc region of human IgG1 at the N-terminus.  |
| <b>Species</b>          | Human   |
| <b>Source</b>           | HEK293  |
| <b>ProteinLength</b>    | 37-310 aa   |
| <b>Form</b>             | Lyophilized from sterile 50mM NaAc, 150mM NaCl, 5mM CaCl <sub>2</sub> , 10% glycerol, PH 5.5.   |
| <b>Molecular Mass</b>   | The recombinant human Fc/tPA $\alpha$ is a disulfide-linked homodimeric protein. The reduced monomer consists of 512 amino acids and has a predicted molecular mass of 57.5 KDa. As a result of glycosylation, the apparent molecular mass of rh Fc/tPA $\alpha$ monomer is approximately 59 KDa in SDS-PAGE under reducing conditions. |
| <b>Endotoxin</b>        | < 1.0 EU per $\mu$ g of the protein as determined by the LAL method.  |
| <b>Purity</b>           | > 95 % as determined by SDS-PAGE  |
| <b>Storage</b>          | Store it under sterile conditions at -20°C to -80°C upon receiving. Recommend to aliquot the protein into smaller quantities for optimal storage. Avoid repeated freeze-thaw cycles.  |

 Tel: 1-631-559-9269 1-516-512-3133

 Email: [info@creative-biomart.com](mailto:info@creative-biomart.com)  Fax: 1-631-938-8127

 45-1 Ramsey Road, Shirley, NY 11967, USA

**Reconstitution** It is recommended that sterile water be added to the vial to prepare a stock solution of 0.2 ug/ul. Centrifuge the vial at 4°C before opening to recover the entire contents.

## GENE INFORMATION

**Gene Name** PLAT plasminogen activator, tissue [ Homo sapiens ]

**Official Symbol** PLAT

**Synonyms** PLAT; plasminogen activator, tissue; tissue-type plasminogen activator; alteplase; reteplase; t-plasminogen activator; plasminogen activator, tissue type; tissue plasminogen activator (t-PA); TPA; T-PA; DKFZp686I03148;

**Gene ID** 5327

**mRNA Refseq** NM\_000930

**Protein Refseq** NP\_000921

**MIM** 173370

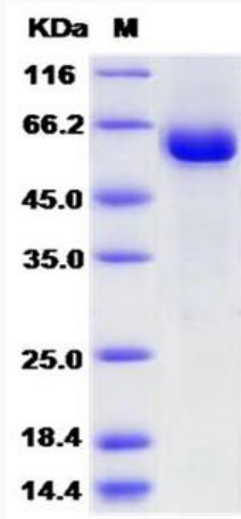
**UniProt ID** P00750

 Tel: 1-631-559-9269 1-516-512-3133

 Email: [info@creative-biomart.com](mailto:info@creative-biomart.com)  Fax: 1-631-938-8127

 45-1 Ramsey Road, Shirley, NY 11967, USA

SDS-PAGE



 Tel: 1-631-559-9269 1-516-512-3133

 Email: [info@creative-biomart.com](mailto:info@creative-biomart.com)  Fax: 1-631-938-8127

 45-1 Ramsey Road, Shirley, NY 11967, USA