

## Recombinant Cynomolgus PLAU protein, His-tagged

**Cat. No.** PLAU-1684C    **Lot. No.** (See product label)

### SPECIFICATION

<b>Product Overview</b>	Recombinant Cynomolgus PLAU protein(A0A2K5WND1)(Ser21-Leu430), fused with C-terminal His tag, was expressed in HEK293.
<b>Species</b>	Cynomolgus
<b>Source</b>	C-His
<b>ProteinLength</b>	Ser21-Leu430
<b>Tag</b>	C-His
<b>Form</b>	Lyophilized from 0.22µm filtered solution in PBS (pH 7.4). Normally 8% trehalose is added as protectant before lyophilization.
<b>Bio-activity</b>	Immobilized Cynomolgus PLAU, His Tag at 1µg/ml (100µl/well) on the plate. Dose response curve for Human uPAR, hFc Tag with the EC50 of 25.1ng/ml determined by ELISA.
<b>Molecular Mass</b>	The protein has a predicted MW of 47.23 kDa. Due to protein lysis and glycosylation, the protein migrates to 23-25 kDa (long chain A), 35-40 kDa (chain B) and 50-60 kDa (long chain A&chain B) based on Tris-Bis PAGE result.
<b>Endotoxin</b>	Less than 1EU per µg by the LAL method.
<b>Purity</b>	> 95% as determined by Tris-Bis PAGE; > 95% as determined by HPLC.

 Tel: 1-631-559-9269    1-516-512-3133

 Email: [info@creative-biomart.com](mailto:info@creative-biomart.com)     Fax: 1-631-938-8127

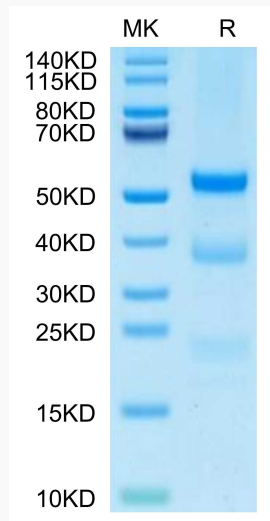
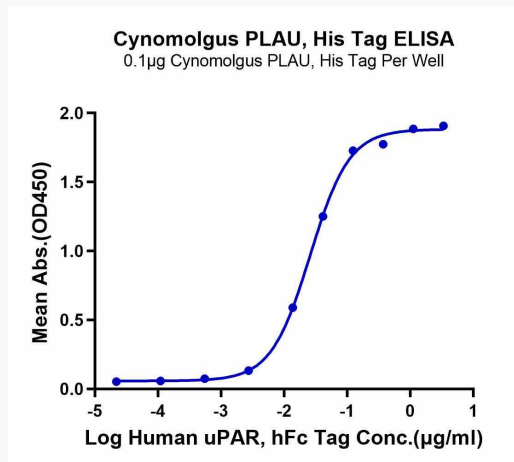
 45-1 Ramsey Road, Shirley, NY 11967, USA

**Storage**

Reconstituted protein stable at -80°C for 12 months, 4°C for 1 week. Use a manual defrost freezer and avoid repeated freeze-thaw cycles.

**Reconstitution**

Centrifuge tubes before opening. Reconstituting to a concentration more than 100 µg/ml is recommended. Dissolve the lyophilized protein in distilled water.

**Tris-Bis PAGE**

**ELISA**


Tel: 1-631-559-9269 1-516-512-3133

Email: [info@creative-biomart.com](mailto:info@creative-biomart.com) Fax: 1-631-938-8127

45-1 Ramsey Road, Shirley, NY 11967, USA