

## Recombinant Cattle PLAU Protein, His-tagged

**Cat. No.** PLAU-391C    **Lot. No.** (See product label)

### SPECIFICATION

<b>Product Overview</b>	Recombinant Cattle PLAU Protein (Ser21-Phe179) with N-His tag was expressed in E. coli.
<b>Species</b>	Cattle
<b>Source</b>	E.coli
<b>ProteinLength</b>	Ser21-Phe179
<b>Description</b>	This gene encodes a secreted serine protease that converts plasminogen to plasmin. The encoded preproprotein is proteolytically processed to generate A and B polypeptide chains. These chains associate via a single disulfide bond to form the catalytically inactive high molecular weight urokinase-type plasminogen activator (HMW-uPA). HMW-uPA can be further processed into the catalytically active low molecular weight urokinase-type plasminogen activator (LMW-uPA). This low molecular weight form does not bind to the urokinase-type plasminogen activator receptor. Mutations in this gene may be associated with Quebec platelet disorder and late-onset Alzheimer's disease. Alternative splicing results in multiple transcript variants, at least one of which encodes an isoform that is proteolytically processed.
<b>Form</b>	Freeze-dried powder
<b>Molecular Mass</b>	Predicted Molecular Mass: 21.7 kDa Accurate Molecular Mass: 22 kDa

 Tel: 1-631-559-9269    1-516-512-3133

 Email: [info@creative-biomart.com](mailto:info@creative-biomart.com)     Fax: 1-631-938-8127

 45-1 Ramsey Road, Shirley, NY 11967, USA

<b>Purity</b>	> 90%
<b>Applications</b>	Positive Control; Immunogen; SDS-PAGE; WB.
<b>Stability</b>	The thermal stability is described by the loss rate. The loss rate was determined by accelerated thermal degradation test, that is, incubate the protein at 37 centigrade for 48h, and no obvious degradation and precipitation were observed. The loss rate is less than 5% within the expiration date under appropriate storage condition.
<b>Storage</b>	Avoid repeated freeze/thaw cycles. Store at 2-8 centigrade for one month. Aliquot and store at -80 centigrade for 12 months.
<b>Storage Buffer</b>	20mM Tris, 150mM NaCl, pH8.0, containing 1mM EDTA, 1mM DTT, 0.01% SKL, 5% Trehalose and Proclin300.
<b>Reconstitution</b>	Reconstitute in sterile water to a concentration of 0.1-1.0 mg/mL. Do not vortex.

## GENE INFORMATION

<b>Gene Name</b>	PLAU plasminogen activator, urokinase [ <a href="#">Bos taurus (cattle)</a> ]
<b>Official Symbol</b>	<a href="#">PLAU</a>
<b>Synonyms</b>	PLAU; plasminogen activator, urokinase; urokinase-type plasminogen activator; U-plasminogen activator; uPA; urokinase plasminogen activator preproprotein; EC 3.4.21.73
<b>Gene ID</b>	<a href="#">281408</a>
<b>mRNA Refseq</b>	<a href="#">NM_174147</a>

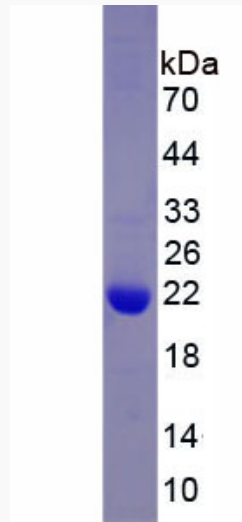
 Tel: 1-631-559-9269 1-516-512-3133

 Email: [info@creative-biomart.com](mailto:info@creative-biomart.com)  Fax: 1-631-938-8127

 45-1 Ramsey Road, Shirley, NY 11967, USA

Protein Refseq NP\_776572

UniProt ID Q05589



 Tel: 1-631-559-9269 1-516-512-3133

 Email: [info@creative-biomart.com](mailto:info@creative-biomart.com)  Fax: 1-631-938-8127

 45-1 Ramsey Road, Shirley, NY 11967, USA