

Recombinant Human PLAUR protein, His-tagged

Cat. No. PLAUR-1569H Lot. No. (See product label)

SPECIFICATION

Product Overview	Recombinant Human PLAUR protein(Q03405-1)(Leu23-Tyr114), fused with C-terminal His tag, was expressed in HEK293.
Species	Human
Source	C-His
ProteinLength	Leu23-Tyr114
Tag	C-His
Form	Lyophilized from 0.22µm filtered solution in PBS (pH 7.4). Normally 8% trehalose is added as protectant before lyophilization.
Bio-activity	
Molecular Mass	The protein has a predicted MW of 11.50 kDa. Due to glycosylation, the protein migrates to 17-25 kDa based on Tris-Bis PAGE result.
Endotoxin	Less than 1EU per µg by the LAL method.
Purity	> 95% as determined by Tris-Bis PAGE; > 95% as determined by HPLC.
Storage	Reconstituted protein stable at -80°C for 12 months, 4°C for 1 week. Use a manual defrost freezer and avoid repeated freeze-thaw cycles.

 Tel: 1-631-559-9269 1-516-512-3133

 Email: info@creative-biomart.com  Fax: 1-631-938-8127

 45-1 Ramsey Road, Shirley, NY 11967, USA



Reconstitution Centrifuge tubes before opening. Reconstituting to a concentration more than 100 µg/ml is recommended. Dissolve the lyophilized protein in distilled water.

GENE INFORMATION

Gene Name PLAUR plasminogen activator, urokinase receptor [Homo sapiens]

Official Symbol PLAUR

Synonyms PLAUR; plasminogen activator, urokinase receptor; urokinase plasminogen activator surface receptor; CD87; UPAR; URKR; urokinase type plasminogen activator (uPA) receptor; monocyte activation antigen Mo3; u-plasminogen activator receptor form 2; urokinase-type plasminogen activator (uPA) receptor; U-PAR;

Gene ID 5329

mRNA Refseq NM_001005376

Protein Refseq NP_001005376

MIM 173391

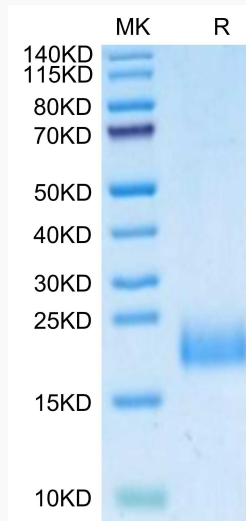
UniProt ID Q03405

 Tel: 1-631-559-9269 1-516-512-3133

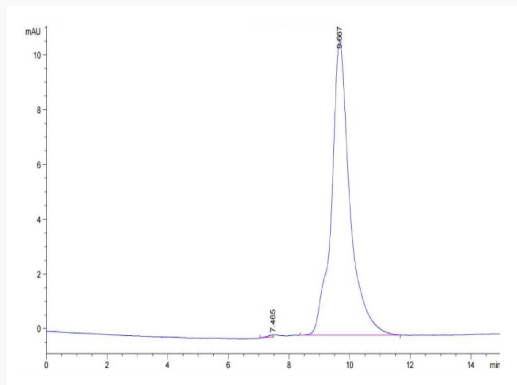
 Email: info@creative-biomart.com  Fax: 1-631-938-8127

 45-1 Ramsey Road, Shirley, NY 11967, USA

Tris-Bis PAGE



SEC-HPLC



 Tel: 1-631-559-9269 1-516-512-3133

 Email: info@creative-biomart.com  Fax: 1-631-938-8127

 45-1 Ramsey Road, Shirley, NY 11967, USA