

Recombinant Full Length Human PLBD1 Protein, C-Flag-tagged

Cat. No. PLBD1-1796HFL **Lot. No.** (See product label)

SPECIFICATION

Product Overview	Recombinant Full Length Human PLBD1 Protein, fused to Flag-tag at C-terminus, was expressed in Mammalian cells.
Species	Human
Source	Mammalian Cells
Description	Predicted to enable phospholipase activity. Predicted to be involved in phospholipid catabolic process. Located in extracellular space.
Form	25 mM Tris HCl, pH 7.3, 100 mM glycine, 10% glycerol.
Molecular Mass	63.1 kDa
AA Sequence	<p>MTRGGPGGRPGLPQPPLLLLLLLLPLLLVTAEPKPKAGVYYATAYWMPAEKTVQVK NVMDKNGDAYGFYN NSVKTGTGWGILEIRAGYGSQTLSEIIMFVAGFLEGYLTAPH MNDHYTNLYPQLITKPSIMDKVQDFMEK QDKWTRKNIKEYKTDSFWRHTGYVMAQI DGLYVGAKKRAILEGTPMTLFQIQFLNSVGDLLDLIPSLSP TKNGLSKVFKRWDMG HCSALIKVLPGFENILFAHSSWYTYAAMLRIYKHWDFNIIDKDTSSSRLSFSSYP GFL ESLDDFYILSSGLILLQTTNSVFNKTLKQVIPETLLSWQVRVANMMADSGKRWADI FSKYNSGTY NNQYMVLDLKKVKNHSLDKGTLYIVEQIPTVEYSEQTDVLRKGYW PSYNVPFHEKIYNWSGYPLLQK LGLDYSYDLAPRAKIFRRDQGKVTDTASMKYIM RYNNYKKDPYSRGDPCNTICREDLNPNPSPGGCYD TKVADIYLASQYTSYAISG PTVQGGLPVFRWDRFNKTLHQGMAEVYNFDFITMKPILKLDIK TRTRPLEQKLISEE</p>

 Tel: 1-631-559-9269 1-516-512-3133

 Email: info@creative-biomart.com  Fax: 1-631-938-8127

 45-1 Ramsey Road, Shirley, NY 11967, USA

DLAANDILDYKDDDDKV

Purity > 80% as determined by SDS-PAGE and Coomassie blue staining.

Stability Stable for 12 months from the date of receipt of the product under proper storage and handling conditions. Avoid repeated freeze-thaw cycles.

Storage Store at -80 centigrade.

Concentration >50 ug/mL as determined by microplate BCA method.

Preparation Recombinant protein was captured through anti-DDK affinity column followed by conventional chromatography steps.

Full Length Full L.

GENE INFORMATION

Gene Name [PLBD1 phospholipase B domain containing 1 \[Homo sapiens \(human\) \]](#)

Official Symbol [PLBD1](#)

Synonyms [FLJ22662](#)

Gene ID [79887](#)

mRNA Refseq [NM_024829.6](#)

Protein Refseq [NP_079105.4](#)

MIM [618486](#)

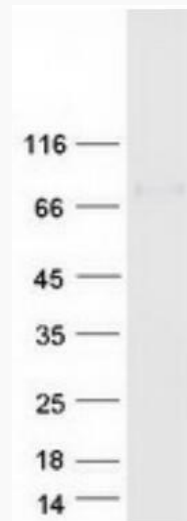
 Tel: 1-631-559-9269 1-516-512-3133

 Email: info@creative-biomart.com  Fax: 1-631-938-8127

 45-1 Ramsey Road, Shirley, NY 11967, USA

UniProt ID

Q6P4A8



Coomassie blue staining of purified PLBD1 protein.

 Tel: 1-631-559-9269 1-516-512-3133

 Email: info@creative-biomart.com  Fax: 1-631-938-8127

 45-1 Ramsey Road, Shirley, NY 11967, USA