

## Recombinant Human PLBD1 Protein, GST-tagged

Cat. No. PLBD1-4279H Lot. No. (See product label)

### SPECIFICATION

<b>Product Overview</b>	Human FLJ22662 full-length ORF ( AAH00909, 1 a.a. - 223 a.a.) recombinant protein with GST-tag at N-terminal.
<b>Species</b>	Human
<b>Source</b>	Wheat Germ
<b>Description</b>	PLBD1 (Phospholipase B Domain Containing 1) is a Protein Coding gene. Among its related pathways are Acyl chain remodelling of PE and Glycerophospholipid biosynthesis. GO annotations related to this gene include hydrolase activity. An important paralog of this gene is PLBD2.
<b>Molecular Mass</b>	50.27 kDa
<b>AA Sequence</b>	MMADSGKRWADIFSKYNSGTYNQYMVLDLKKVCLNHSLDKGTLIYVEQIPTIYVEYS EQTDVLRKGYWPSYNVFPFHEKIYNWSGYPLLQKGLDYSYDLAPRAKIFRRDQGK VTDTASMKYIMRYNNYKDPYSRGDPCNTICCREDLNSPNPSPGGCYDTKVADIYL ASQYTSYAISGPTVQGGPLVFRWDRFNKTLHQGMAEVYNFDFITMKPILKLDIK
<b>Applications</b>	Enzyme-linked Immunoabsorbent Assay Western Blot (Recombinant protein) Antibody Production Protein Array
<b>Notes</b>	Best use within three months from the date of receipt of this protein.

 Tel: 1-631-559-9269 1-516-512-3133

 Email: [info@creative-biomart.com](mailto:info@creative-biomart.com)  Fax: 1-631-938-8127

 45-1 Ramsey Road, Shirley, NY 11967, USA

**Storage** Store at -80 centigrade. Aliquot to avoid repeated freezing and thawing.

**Storage Buffer** 50 mM Tris-HCl, 10 mM reduced Glutathione, pH=8.0 in the elution buffer.

## GENE INFORMATION

**Gene Name** PLBD1 phospholipase B domain containing 1 [ Homo sapiens (human) ]

**Official Symbol** PLBD1

**Synonyms** PLBD1; phospholipase B domain containing 1; phospholipase B-like 1; LAMA-like protein 1; PLB homolog 1; lamina ancestor homolog 1; phospholipase B domain-containing protein 1; putative phospholipase B-like 1

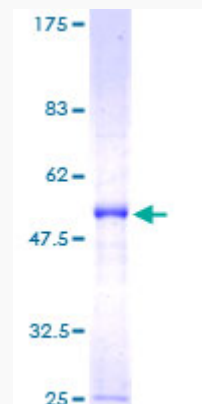
**Gene ID** 79887

**mRNA Refseq** NM\_024829

**Protein Refseq** NP\_079105

**UniProt ID** Q6P4A8

**Quality Control Testing**



Tel: 1-631-559-9269 1-516-512-3133

Email: [info@creative-biomart.com](mailto:info@creative-biomart.com) Fax: 1-631-938-8127

45-1 Ramsey Road, Shirley, NY 11967, USA



12.5% SDS-PAGE Stained with Coomassie Blue.

 Tel: 1-631-559-9269 1-516-512-3133

 Email: [info@creative-biomart.com](mailto:info@creative-biomart.com)  Fax: 1-631-938-8127

 45-1 Ramsey Road, Shirley, NY 11967, USA