

Recombinant Human PLBD1 Protein, Myc/DDK-tagged, C13 and N15-labeled

Cat. No. PLBD1-5051H Lot. No. (See product label)

SPECIFICATION

Product Overview	PLBD1 MS Standard C13 and N15-labeled recombinant protein (NP_079105) with a C-terminal MYC/DDK tag, was expressed in HEK293 cells.
Species	Human
Source	HEK293
Description	PLBD1 (Phospholipase B Domain Containing 1) is a Protein Coding gene. Diseases associated with PLBD1 include 45,X/46,Xy Mixed Gonadal Dysgenesis. Among its related pathways are Acyl chain remodelling of PE and Metabolism. Gene Ontology (GO) annotations related to this gene include hydrolase activity. An important paralog of this gene is PLBD2.
Molecular Mass	63.1 kDa
AA Sequence	MTRGGPGGRPGLPQPPPLLLLLLLLPLLLVTAEPKPKAGVYYATAYWMPAEKTVQVK NVMDKNGDAYGFYNNVSKTTGWGILEIRAGYGSQTLSEIIMFVAGFLEGYLTAPHM NDHYTNLYPQLITKPSIMDKVQDFMEKQDKWTRKNIKEYKTDSEFWRHTGYVMAQID GLYVGAKKRAILEGKPMTLFQIQFLNSVGDLLDLIPSLSPTKNGSLKVFKRWDMGH CSALIKVLPGFENILFAHSSWYTYAAMLRIYKHWDFNIIDKDTSSSRLSFSSYPGFLES LDDFYILSSGLILLQTTNSVFNKTLKQVIPETLLSWQRVRVANMMADSGKRWADIFS KYNSGTYNQYMVLDLKVKLNHSLDKGTLTYVEYSEQTDVLRKGYWPSY NVPFHEKIYNWSGYPLLQKLGLDYSYDLAPRAKIFRRDQGKVTDTASMKYIMRYNN

 Tel: 1-631-559-9269 1-516-512-3133

 Email: info@creative-biomart.com  Fax: 1-631-938-8127

 45-1 Ramsey Road, Shirley, NY 11967, USA

YKKDPYSRGDPCNTICCREDLNSPNPSPGGCYDTKVADIYLASQYTSYAISGPTVQG
 GLPVFRWDRFNKTLHQGMAEVYNFDFITMKPILKLDIKTRTRPLEQKLISEEDLAANDI
 LDYKDDDDKV

Purity > 80% as determined by SDS-PAGE and Coomassie blue staining

Stability Stable for 3 months from receipt of products under proper storage and handling conditions.

Storage Store at -80 centigrade. Avoid repeated freeze-thaw cycles.

Concentration 50 µg/mL as determined by BCA

Storage Buffer 100 mM glycine, 25 mM Tris-HCl, pH 7.3.

GENE INFORMATION

Gene Name [PLBD1 phospholipase B domain containing 1 \[Homo sapiens \(human\) \]](#)

Official Symbol [PLBD1](#)

Synonyms PLBD1; phospholipase B domain containing 1; phospholipase B-like 1; FLJ22662; PLB homolog 1 (Dictyostelium); PLB homolog 1; LAMA-like protein 1; lamina ancestor homolog 1; putative phospholipase B-like 1; phospholipase B domain-containing protein 1;

Gene ID [79887](#)

mRNA Refseq [NM_024829](#)

Protein Refseq [NP_079105](#)

 Tel: 1-631-559-9269 1-516-512-3133

 Email: info@creative-biomart.com  Fax: 1-631-938-8127

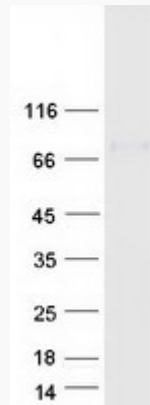
 45-1 Ramsey Road, Shirley, NY 11967, USA



MIM 618486

UniProt ID Q6P4A8

SDS-PAGE



Tel: 1-631-559-9269 1-516-512-3133

Email: info@creative-biomart.com Fax: 1-631-938-8127

45-1 Ramsey Road, Shirley, NY 11967, USA