

# Recombinant *Listeria Monocytogenes* Serovar 1/2a PLCA Protein (23-317 aa)

Cat. No. PLCA-2386L Lot. No. (See product label)

## SPECIFICATION

<b>Product Overview</b>	Recombinant <i>Listeria Monocytogenes</i> Serovar 1/2a (strain ATCC BAA-679/EGD-e) PLCA Protein (23-317 aa) is produced by E. coli expression system. Protein Description: Full Length of Mature Protein.
<b>Species</b>	<i>Listeria Monocytogenes</i> Serovar 1/2a
<b>Source</b>	E.coli
<b>ProteinLength</b>	23-317 aa
<b>Description</b>	Cleaves glycosylphosphatidylinositol (GPI) and phosphatidylinositol (PI) anchors but not PI phosphates. Important factor in pathogenesis, PI-PLC activity is present only in virulent listeria species. It may participate in the lysis of the phagolysosomal membrane.
<b>Form</b>	Tris-based buffer, 50% glycerol
<b>Molecular Mass</b>	33.5 kDa
<b>AA Sequence</b>	FPLGGKAYSLNNWNKPIKNSVTTKQWMSALPDTTNLAALSIPGTHDTMSYNGDITW TLTKPLAQTQTMSLYQQLEAGIRYIDIRAKDNLNIYHGPIFLNASLSGVLETITQFLKKN PKETIIMRLKDEQNSNDSFDYRIQPLINIYKDYFYTTTPRTDTSNKIPTLKDVRGKILLLS ENHTKKPLVINSRKFGMQFGAPNQVIQDDYNGPSVKTKFKEIVQTAYQASKADNKLF LNHISATSLTFTPRQYAAALNNKVEQFVLNLTSEKVRGLGILIMDFPEKQTIKNIKNNK

 Tel: 1-631-559-9269 1-516-512-3133

 Email: [info@creative-biomart.com](mailto:info@creative-biomart.com)  Fax: 1-631-938-8127

 45-1 Ramsey Road, Shirley, NY 11967, USA

	FN
<b>Purity</b>	> 85% as determined by SDS-PAGE.
<b>Notes</b>	Repeated freezing and thawing is not recommended. Store working aliquots at 4 centigrade for up to one week.
<b>Storage</b>	The shelf life is related to many factors, storage state, buffer ingredients, storage temperature and the stability of the protein itself. Generally, the shelf life of liquid form is 6 months at -20 centigrade/-80 centigrade. The shelf life of lyophilized form is 12 months at -20 centigrade/-80 centigrade.
<b>Concentration</b>	A hardcopy of COA will be sent along with the products. Please refer to it for detailed information.

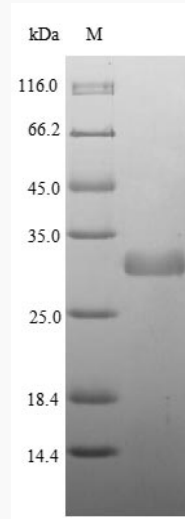
## GENE INFORMATION

<b>Gene Name</b>	<a href="#">plcA phosphatidylinositol-specific phospholipase c [ Listeria monocytogenes EGD-e ]</a>
<b>Official Symbol</b>	<a href="#">PLCA</a>
<b>Synonyms</b>	plcA;
<b>Gene ID</b>	<a href="#">987032</a>
<b>Protein Refseq</b>	<a href="#">NP_463732</a>
<b>UniProt ID</b>	<a href="#">P34024</a>

 Tel: 1-631-559-9269 1-516-512-3133

 Email: [info@creative-biomart.com](mailto:info@creative-biomart.com)  Fax: 1-631-938-8127

 45-1 Ramsey Road, Shirley, NY 11967, USA



(Tris-Glycine gel) Discontinuous SDS-PAGE (reduced) with 5% enrichment gel and 15% separation gel.

 Tel: 1-631-559-9269 1-516-512-3133

 Email: [info@creative-biomart.com](mailto:info@creative-biomart.com)  Fax: 1-631-938-8127

 45-1 Ramsey Road, Shirley, NY 11967, USA