

## Recombinant Human PLCD4 protein, His & T7-tagged

Cat. No. PLCD4-8268H Lot. No. (See product label)

### SPECIFICATION

<b>Product Overview</b>	Recombinant Human PLCD4 aa. (Met1~Asp250 (Accession # Q9BRC7)) fused with N-terminal His & T7 tag was produced in E. coli cells.
<b>Species</b>	Human
<b>Source</b>	E.coli
<b>ProteinLength</b>	Met1~Asp250
<b>Form</b>	<1.0EU per 1µg (determined by the LAL method)
<b>Molecular Mass</b>	Predicted Molecular Mass: 32.8kDa.
<b>Endotoxin</b>	<1.0EU per 1ug (determined by the LAL method)
<b>Purity</b>	>95%
<b>Characteristic</b>	The isoelectric point is 4.8.
<b>Applications</b>	SDS-PAGE; WB; ELISA; IP.
<b>Stability</b>	The thermal stability is described by the loss rate of the target protein. The loss rate was determined by accelerated thermal degradation test, that is, incubate the protein at 37°C for 48h, and no obvious degradation and precipitation were observed. (Referring from China Biological Products Standard, which was calculated by the

 Tel: 1-631-559-9269 1-516-512-3133

 Email: [info@creative-biomart.com](mailto:info@creative-biomart.com)  Fax: 1-631-938-8127

 45-1 Ramsey Road, Shirley, NY 11967, USA

Arrhenius equation.) The loss of this protein is less than 5% within the expiration date under appropriate storage condition.

**Storage**

Avoid repeated freeze/thaw cycles. Store at 2-8°C for one month. Aliquot and store at -80°C for 12 months.

**Storage Buffer**

Supplied as lyophilized form in 20mM Tris, 150mM NaCl, pH8.0, containing 1mM EDTA, 1mM DTT, 0.01% sarcosyl, 5% trehalose, and preservative.

**Reconstitution**

Reconstitute in sterile ddH<sub>2</sub>O.

## GENE INFORMATION

**Gene Name**

PLCD4 phospholipase C delta 4 [ Homo sapiens (human) ]

**Official Symbol**

PLCD4

**Synonyms**

PLCD4; phospholipase C delta 4; 1-phosphatidylinositol 4,5-bisphosphate phosphodiesterase delta-4; PLC delta4; phosphoinositide phospholipase C-delta-4

**Gene ID**

84812

**mRNA Refseq**

NM\_032726.3

**Protein Refseq**

NP\_116115.1

**UniProt ID**

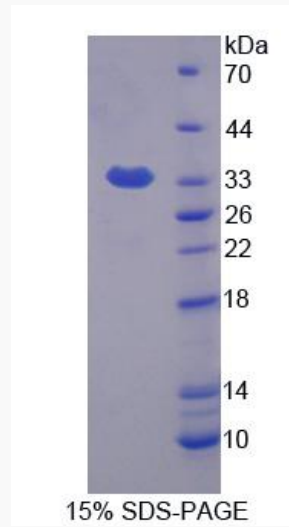
Q9BRC7

 Tel: 1-631-559-9269 1-516-512-3133

 Email: [info@creative-biomart.com](mailto:info@creative-biomart.com)  Fax: 1-631-938-8127

 45-1 Ramsey Road, Shirley, NY 11967, USA

**SDS-PAGE**



 Tel: 1-631-559-9269 1-516-512-3133

 Email: [info@creative-biomart.com](mailto:info@creative-biomart.com)  Fax: 1-631-938-8127

 45-1 Ramsey Road, Shirley, NY 11967, USA