

# Recombinant Human PLCE1 Protein, Myc/DDK-tagged, C13 and N15-labeled

Cat. No. PLCE1-2513H Lot. No. (See product label)

## SPECIFICATION

<b>Product Overview</b>	PLCE1 MS Standard C13 and N15-labeled recombinant protein (NP_057425) with a C-terminal MYC/DDK tag, was expressed in HEK293 cells.
<b>Species</b>	Human
<b>Source</b>	HEK293
<b>Description</b>	This gene encodes a phospholipase enzyme that catalyzes the hydrolysis of phosphatidylinositol-4,5-bisphosphate to generate two second messengers: inositol 1,4,5-triphosphate (IP3) and diacylglycerol (DAG). These second messengers subsequently regulate various processes affecting cell growth, differentiation, and gene expression. This enzyme is regulated by small monomeric GTPases of the Ras and Rho families and by heterotrimeric G proteins. In addition to its phospholipase C catalytic activity, this enzyme has an N-terminal domain with guanine nucleotide exchange (GEF) activity. Mutations in this gene cause early-onset nephrotic syndrome; characterized by proteinuria, edema, and diffuse mesangial sclerosis or focal and segmental glomerulosclerosis. Alternative splicing results in multiple transcript variants encoding distinct isoforms.
<b>Molecular Mass</b>	259.2 kDa
<b>AA Sequence</b>	MTSEEMTASVLIPVTQRKVVSAQSAADESSEKVS DINISKAHTVRRSGETSHTISQLN KLKEEPSGSNLPKILSIAREKIVSDENSNEKCWEKIMPDSAKNLNINCNNILRNHQHG LPQRQFYEMYNSVAEEDLCLETGIPSPLERKVFPGIQLELDRPSMGISPLGNQSVIIE

 Tel: 1-631-559-9269 1-516-512-3133

 Email: [info@creative-biomart.com](mailto:info@creative-biomart.com)  Fax: 1-631-938-8127

 45-1 Ramsey Road, Shirley, NY 11967, USA



TGRAHPDSRRAVHFHFHYEVDRRMSDTFCTLSENILDDCGNCVPLPGGEEKQKKNY  
VAYTCKLMELAKNCDNKNEQLQCDHCDTLNDKYFCFEGSCEKVDMVYSGDSFCRK  
DFTDSQAAKTFLSHFEDFPDNCDDVEEDAFKSKKERSTLLVRRFCKNDREVKKS  
TGTRAIVRTLPSGHIGLTAWSYIDQKRNGPLLPCGRVMEPPSTVEIRQDGSQRLSEA  
QWYPIYNAVRREETENTVGSLLHFLTCLPASETAHGRISVGPCLKQCVRDTVCEYRA  
TLQRTSISQYITGSLLLEATTSLGARSGLLSTFGGSTGRMMLKERQPGPSVANSNALP  
SSSAGISKELIDLQPLIQFPEEVASILMEQEQTIRRVLPVDYLCFLTRDLGTPECQSS  
LPCLKASISASILTQNGEHNALDLMVRFNEVSSWVTWLITAGSMEEKREVFSYLV  
HVAKCCWNMGNYNAVMEFLAGLSRKLKMWQFMDQSDIETMRSLKDAMAQHE  
SCEYRKVVTRALHIPGCKVVPFCGVFLKELCEVLDGASGLMKLCPRYNSQEETLEFV  
ADYSGQDNFLQRVGQNGLNSEKESTVNSIFQVIRSCNRSLETDEEDSPSEGNSSR  
KSSLKDKSRWQFIIGDLLSDNDIFEQSKEYDSHGSEDSQKAFDHGTELIPWYVLSIQ  
ADVHQFLLQGATVIHYDQDTHLSARCFLQLQPDNSTLTWVKPTTASPASSKAKLGV  
NNTAEPGKFPLLGNAGLSSLTEGVLDLFAVKAVYMGHPGIDIHTVCVQNKLGSMFLS  
ETGVTLTYGLQTTDNRLHFVAPKHTAKMLFSGLLELTRA VRKMRKFPDQRQQWLR  
KQYVSLYQEDGRYEGPTLAHAVELFGGRRWSARNPSPGTSAKNAEKPNMQRNNTL  
GISTTKKKKILMRGESGEVTDDEMATRKAKMHKECRSRSGSDPDINEQEESV  
AIANPPNPLPSRRAHSLTTAGSPNLAAGTSSPIRPVSSPVLSSSNKSPSSAWSSSSW  
HGRIKGGMKGFSFMVSDSNMSFVEFVELFKSFSVRSRKDLKDLFDVYAVPCNRS  
GSESAPLYTNLTIDENTSDLQPDLLTRNVSDLGLFIKSKQQLSDNQRQISDAIAAAS  
IVTNGTGIESTSLGIFGVGILQLNDFLVNCQGEHCTYDEILSIIQKFEPSISMCHQGLMS  
FEGFARFLMDKENFASKNDESQENIKELQLPLSYYYIESSHNTYLTGHQLKGESSVE  
LYSQVLLQGCRSVELDCWDGDDGMPPIYHGHTLTTKIPFKEVVEAIDRSAFINSDLP  
SIENHCSLPQQRKMAEIFKTVFGEKLVTKFLFETDFSDDPMLPSPDQLRKKVLLKNKK  
LKAHQTPVDILKQKAHQLASMVQVAYNGGNANPRPANNEEEDEEYDYDYESL  
SDDNILED RPENKSCNDKLQFEYNEEIPKRIKKADNSACNKGKVVDMELGEEFYLDQ  
NKKESRQIAPELSDLVIYCQAVKFPGLSTLNASGSSRGKERKSRKSIFGNPGRMSP  
GETASFNKTSGKSSCEGIRQTWEES SPLNPTTSLSAIIRTPKCYHISSLNENAAKRL  
CRRYSQKLTQHTACQLLRTYPAATRIDSSNPPLMFWLHGIQLVALNYQTDDLPLHL  
NAAMFEANGGCGYVLKPPVLWDKNCMPYQKFSPLERDLDSMDPAVYSLTIVSGQN

Tel: 1-631-559-9269 1-516-512-3133

Email: [info@creative-biomart.com](mailto:info@creative-biomart.com) Fax: 1-631-938-8127

45-1 Ramsey Road, Shirley, NY 11967, USA

VCPSNSMGSPCIEVDVLGMPLDSCHFRTKPIHRNTLNPMWNEQFLFHVHFEDLVFL  
 RFAVVENNSSAVTAQRIIPLKALKRGRHLQLRNLHNEVLEISSLFINSRRMEENSSG  
 NTMSASSMFNTEERKCLQTHRVTVHGVPGEPEFTVFTINGGKAKQLLQQILTNEQ  
 DIKPVTTDYFLMEEKYFISKEKNECRKQPFQRAIGPEEEIMQILSSWFPEEGYMGRIV  
 LKTQQENLEEKNIQDDKEVILSSEESFFVQVHDVSPEQPRTVIKAPRVSTAQDVIQ  
 QTLCKAKYSYSILSNPNPSDYVLLLEEVVKDTTNNKTTTPKSSQRVLLDQECVFQAQS  
 KWKGAGKFIKLKEQVQASREDKKKGISFASELKKLTKSTKQPRGLTSPSQLLTSESI  
 QTKEEKPVGGLSSSDTMDYRQTRTRPLEQKLISEEDLAANDILDYKDDDDKV

**Purity** > 80% as determined by SDS-PAGE and Coomassie blue staining

**Stability** Stable for 3 months from receipt of products under proper storage and handling conditions.

**Storage** Store at -80 centigrade. Avoid repeated freeze-thaw cycles.

**Concentration** 50 µg/mL as determined by BCA

**Storage Buffer** 100 mM glycine, 25 mM Tris-HCl, pH 7.3.

## GENE INFORMATION

**Gene Name** [PLCE1 phospholipase C epsilon 1 \[ Homo sapiens \(human\) \]](#)

**Official Symbol** [PLCE1](#)

**Synonyms** PLCE1; phospholipase C epsilon 1; PLCE; PPLC; NPHS3; 1-phosphatidylinositol 4,5-bisphosphate phosphodiesterase epsilon-1; PLC-epsilon-1; pancreas-enriched phospholipase C; phosphoinositide phospholipase C; phosphoinositide phospholipase C-epsilon-1; phosphoinositide-specific phospholipase C epsilon-1; EC 3.1.4.11

 Tel: 1-631-559-9269 1-516-512-3133

 Email: [info@creative-biomart.com](mailto:info@creative-biomart.com)  Fax: 1-631-938-8127

 45-1 Ramsey Road, Shirley, NY 11967, USA

**Gene ID** 51196

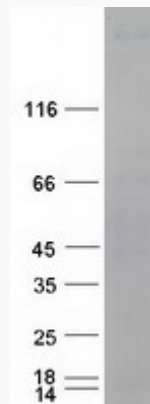
**mRNA Refseq** NM\_016341


**Protein Refseq** NP\_057425

**MIM** 608414

**UniProt ID** Q9P212

**SDS-PAGE**



 Tel: 1-631-559-9269 1-516-512-3133

 Email: [info@creative-biomart.com](mailto:info@creative-biomart.com)  Fax: 1-631-938-8127

 45-1 Ramsey Road, Shirley, NY 11967, USA