

Recombinant Human PLCXD3 Protein, Myc/DDK-tagged, C13 and N15-labeled

Cat. No. PLCXD3-1643H **Lot. No.** (See product label)

SPECIFICATION

Product Overview	PLCXD3 MS Standard C13 and N15-labeled recombinant protein (NP_001005473) with a C-terminal MYC/DDK tag, was expressed in HEK293 cells.
Species	Human
Source	HEK293
Description	PLCXD3 (Phosphatidylinositol Specific Phospholipase C X Domain Containing 3) is a Protein Coding gene. Diseases associated with PLCXD3 include Creutzfeldt-Jakob Disease. Among its related pathways are Ectoderm Differentiation. Gene Ontology (GO) annotations related to this gene include obsolete signal transducer activity and phosphoric diester hydrolase activity. An important paralog of this gene is PLCXD2.
Molecular Mass	36.1 kDa
AA Sequence	<p>MASSQGKNEKLADWMATLPESMHSIPLTNLAIPGSHDSFSFYIDEASVGPPEQPET VQNFVSVFGTVAKKLMRKWLATQTMNFTGQLGAGIRYFDLRISTKPRDPDNELYFA HGLFSAKVNLEEGLEINAFLTDHHEKEVVFLDFNHFYGMQKYHHEKLVQMLKDIYGNK MCPAIFAQEVSLKYLWEKDYQVLVIFYHSPVALEVPFLWPGQMMMPAPWANTTDPEK LIQFLQASITERRKKGSFFISQVVLTPKASTVVKGVASGLRETITERALPAMMQWVRT QKPGESGINIVTADFVELGDFISTVIKLNIVFDEGEANTTRTRPLEQKLISEEDLAANDI LDYKDDDDKV</p>
Purity	> 80% as determined by SDS-PAGE and Coomassie blue staining

 Tel: 1-631-559-9269 1-516-512-3133

 Email: info@creative-biomart.com  Fax: 1-631-938-8127

 45-1 Ramsey Road, Shirley, NY 11967, USA

Stability	Stable for 3 months from receipt of products under proper storage and handling conditions.
Storage	Store at -80 centigrade. Avoid repeated freeze-thaw cycles.
Concentration	50 µg/mL as determined by BCA
Storage Buffer	100 mM glycine, 25 mM Tris-HCl, pH 7.3.

GENE INFORMATION

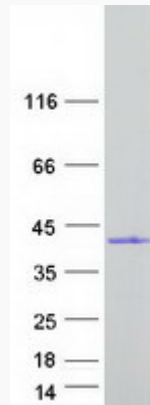
Gene Name	PLCXD3 phosphatidylinositol specific phospholipase C X domain containing 3 [Homo sapiens (human)]
Official Symbol	PLCXD3
Synonyms	PLCXD3; phosphatidylinositol-specific phospholipase C, X domain containing 3; PI-PLC X domain-containing protein 3;
Gene ID	345557
mRNA Refseq	NM_001005473
Protein Refseq	NP_001005473
MIM	617016
UniProt ID	Q63HM9

 Tel: 1-631-559-9269 1-516-512-3133

 Email: info@creative-biomart.com  Fax: 1-631-938-8127

 45-1 Ramsey Road, Shirley, NY 11967, USA

SDS-PAGE



 Tel: 1-631-559-9269 1-516-512-3133

 Email: info@creative-biomart.com  Fax: 1-631-938-8127

 45-1 Ramsey Road, Shirley, NY 11967, USA