

Recombinant Human PLCZ1 Protein, His-tagged

Cat. No. PLCZ1-2596H Lot. No. (See product label)

SPECIFICATION

Product Overview	Recombinant Human PLCZ1 Protein (Ser469-Thr572) with a N-His tag was expressed in E. coli.
Species	Human
Source	E.coli
ProteinLength	Ser469-Thr572
Description	<p>The protein encoded by this gene is a member of the phosphoinositide-specific phospholipase C family. Members in this family, classified into six isotypes that are tissue- and organ-specific, hydrolyze phosphatidylinositol 4,5-bisphosphate just before the phosphate group to yield diacylglycerol and inositol 1,4,5-trisphosphate. This protein localizes to the acrosome in spermatozoa and elicits Ca(2+) oscillations and egg activation during fertilization that leads to early embryonic development. Alternative splicing results in multiple transcript variants.</p>
Form	Freeze-dried powder
Molecular Mass	Predicted Molecular Mass: 15.4 kDa Accurate Molecular Mass: 13/15 kDa
Endotoxin	<1.0 EU per 1g (determined by the LAL method).
Purity	> 95%

 Tel: 1-631-559-9269 1-516-512-3133

 Email: info@creative-biomart.com  Fax: 1-631-938-8127

 45-1 Ramsey Road, Shirley, NY 11967, USA

Applications	Positive Control; Immunogen; SDS-PAGE; WB.
Stability	The thermal stability is described by the loss rate. The loss rate was determined by accelerated thermal degradation test, that is, incubate the protein at 37 centigrade for 48h, and no obvious degradation and precipitation were observed. The loss rate is less than 5% within the expiration date under appropriate storage condition.
Storage	Avoid repeated freeze/thaw cycles. Store at 2-8 centigrade for one month. Aliquot and store at -80 centigrade for 12 months.
Storage Buffer	20mM Tris, 150mM NaCl, pH8.0, containing 1mM EDTA, 1mM DTT, 0.01% SKL, 5% Trehalose and Proclin300.
Reconstitution	Reconstitute in 10mM PBS (pH7.4) to a concentration of 0.1-1.0 mg/mL. Do not vortex.

GENE INFORMATION

Gene Name	PLCZ1 phospholipase C, zeta 1 [Homo sapiens (human)]
Official Symbol	PLCZ1
Synonyms	PLCZ1; phospholipase C, zeta 1; 1-phosphatidylinositol 4,5-bisphosphate phosphodiesterase zeta-1; NYD SP27; PLCzeta; PLC-zeta-1; phospholipase C-zeta-1; PI-phospholipase C zeta 1; testis-development protein NYD-SP27; testis-development related NYD-SP27; phosphoinositide phospholipase C-zeta-1; 1-phosphatidylinositol-4,5-bisphosphate phosphodiesterase zeta-1; NYD-SP27; MGC149685;
Gene ID	89869

 Tel: 1-631-559-9269 1-516-512-3133

 Email: info@creative-biomart.com  Fax: 1-631-938-8127

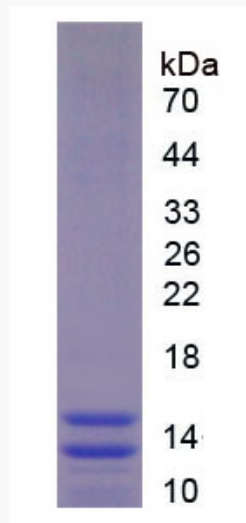
 45-1 Ramsey Road, Shirley, NY 11967, USA

mRNA Refseq [NM_033123](#)

Protein Refseq [NP_149114](#)

MIM [608075](#)

UniProt ID [Q86YW0](#)



 Tel: 1-631-559-9269 1-516-512-3133

 Email: info@creative-biomart.com  Fax: 1-631-938-8127

 45-1 Ramsey Road, Shirley, NY 11967, USA