

Recombinant Human PLEKHH3 Protein, GST-tagged

Cat. No. PLEKHH3-4265H **Lot. No.** (See product label)

SPECIFICATION

Product Overview	Human FLJ21019 partial ORF (NP_079203, 665 a.a. - 750 a.a.) recombinant protein with GST-tag at N-terminal.
Species	Human
Source	Wheat Germ
Description	PLEKHH3 (Pleckstrin Homology, MyTH4 And FERM Domain Containing H3) is a Protein Coding gene. An important paralog of this gene is MYO1C.
Molecular Mass	35.2 kDa
AA Sequence	DVLELSTEPGRGAPQKLCLGLGAKAMSLSRPGETEPIHSVSYGHVAACQLMGPHTL ALRVGESQLLLQSPQVEEIMQLVNAYLANP
Applications	Enzyme-linked Immunoabsorbent Assay Western Blot (Recombinant protein) Antibody Production Protein Array
Notes	Best use within three months from the date of receipt of this protein.
Storage	Store at -80 centigrade. Aliquot to avoid repeated freezing and thawing.
Storage Buffer	50 mM Tris-HCl, 10 mM reduced Glutathione, pH=8.0 in the elution buffer.

 Tel: 1-631-559-9269 1-516-512-3133

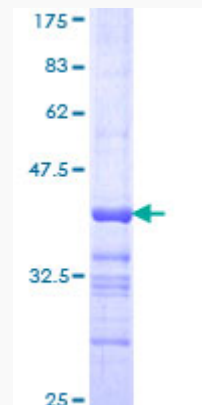
 Email: info@creative-biomart.com  Fax: 1-631-938-8127

 45-1 Ramsey Road, Shirley, NY 11967, USA

GENE INFORMATION

Gene Name	PLEKHH3 pleckstrin homology domain containing, family H (with MyTH4 domain) member 3 [Homo sapiens]
Official Symbol	PLEKHH3
Synonyms	PLEKHH3; pleckstrin homology domain containing, family H (with MyTH4 domain) member 3; pleckstrin homology domain-containing family H member 3; FLJ21019; PH domain-containing family H member 3;
Gene ID	79990
mRNA Refseq	NM_024927
Protein Refseq	NP_079203
UniProt ID	Q7Z736

Quality Control Testing



12.5% SDS-PAGE Stained with Coomassie Blue.

 Tel: 1-631-559-9269 1-516-512-3133

 Email: info@creative-biomart.com  Fax: 1-631-938-8127

 45-1 Ramsey Road, Shirley, NY 11967, USA