

# Recombinant Full Length Human PLIN2 Protein, C-Flag-tagged

Cat. No. PLIN2-2087HFL Lot. No. (See product label)

## SPECIFICATION

<b>Product Overview</b>	Recombinant Full Length Human PLIN2 Protein, fused to Flag-tag at C-terminus, was expressed in Mammalian cells.
<b>Species</b>	Human
<b>Source</b>	Mammalian Cells
<b>Description</b>	<p>The protein encoded by this gene belongs to the perilipin family, members of which coat intracellular lipid storage droplets. This protein is associated with the lipid globule surface membrane material, and maybe involved in development and maintenance of adipose tissue. However, it is not restricted to adipocytes as previously thought, but is found in a wide range of cultured cell lines, including fibroblasts, endothelial and epithelial cells, and tissues, such as lactating mammary gland, adrenal cortex, Sertoli and Leydig cells, and hepatocytes in alcoholic liver cirrhosis, suggesting that it may serve as a marker of lipid accumulation in diverse cell types and diseases. Alternatively spliced transcript variants have been found for this gene.</p>
<b>Form</b>	25 mM Tris HCl, pH 7.3, 100 mM glycine, 10% glycerol.
<b>Molecular Mass</b>	47.9 kDa
<b>AA Sequence</b>	<p>MASVAVDPQPSVVTRVVNLPLVSSTYDLMSSAYLSTKDQYPYLKSVCEMAENGVKT            ITSVAMTSALPIIQ KLEPQIAVANTYACKGLDRIEERLPILNQPSTQIVANAKGAVTGA            KDAVTTTGTGAKDSVASTITGVMDK TKGAVTGSVEKTKSVVSGSINTVLGSRMMQL            VSSGVENALTKSELLVEQYLPLTEEELEKEAKKVEGFDL VQKPSYYVRLGSLSTKLH</p>

 Tel: 1-631-559-9269 1-516-512-3133

 Email: [info@creative-biomart.com](mailto:info@creative-biomart.com)  Fax: 1-631-938-8127

 45-1 Ramsey Road, Shirley, NY 11967, USA

SRAYQQALSRVKEAKQKSQQTISQLHSTVHLIEFARKNVYSANQKIQDAQDK LYLS  
 WVEWKRSIGYDDTDESHCAEHIESRTLAIARNLTQQLQTTCHTLLSNIQGVQPNIQD  
 QAKHMGVMA GDIYSVFRNAASFKEVSDSLTSSKGQLQKMKESLDDVMDYLVNNT  
 PLNWLVGPFYPQLTESQNAQDQGA EMDKSSQETQRSEHKTH TRTRPLEQKLISEE  
 DLAANDILDYKDDDDKV

**Purity** > 80% as determined by SDS-PAGE and Coomassie blue staining.

**Stability** Stable for 12 months from the date of receipt of the product under proper storage and handling conditions. Avoid repeated freeze-thaw cycles.

**Storage** Store at -80 centigrade.

**Concentration** >50 ug/mL as determined by microplate BCA method.

**Preparation** Recombinant protein was captured through anti-DDK affinity column followed by conventional chromatography steps.

**Protein Families** Druggable Genome

**Full Length** Full L.

## GENE INFORMATION

**Gene Name** [PLIN2 perilipin 2 \[ Homo sapiens \(human\) \]](#)

**Official Symbol** [PLIN2](#)

**Synonyms** ADFP; ADRP

**Gene ID** [123](#)

 Tel: 1-631-559-9269 1-516-512-3133

 Email: [info@creative-biomart.com](mailto:info@creative-biomart.com)  Fax: 1-631-938-8127

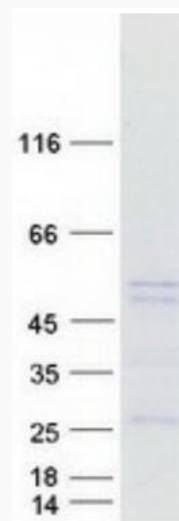
 45-1 Ramsey Road, Shirley, NY 11967, USA

mRNA Refseq [NM\\_001122.4](#)

Protein Refseq [NP\\_001113.2](#)

MIM [103195](#)

UniProt ID [Q99541](#)



Coomassie blue staining of purified PLIN2 protein.

 Tel: 1-631-559-9269 1-516-512-3133

 Email: [info@creative-biomart.com](mailto:info@creative-biomart.com)  Fax: 1-631-938-8127

 45-1 Ramsey Road, Shirley, NY 11967, USA