

Recombinant Human PLIN2 Protein (444 AA), N-8xHis tagged

Cat. No. PLIN2-23H Lot. No. (See product label)

SPECIFICATION

Product Overview	Recombinant Human PLIN2 Protein with N-8xHis-tag was expressed in E. coli.
Species	Human
Source	E.coli
ProteinLength	444 AA
Description	<p>The protein encoded by this gene belongs to the perilipin family, members of which coat intracellular lipid storage droplets. This protein is associated with the lipid globule surface membrane material, and maybe involved in development and maintenance of adipose tissue. However, it is not restricted to adipocytes as previously thought, but is found in a wide range of cultured cell lines, including fibroblasts, endothelial and epithelial cells, and tissues, such as lactating mammary gland, adrenal cortex, Sertoli and Leydig cells, and hepatocytes in alcoholic liver cirrhosis, suggesting that it may serve as a marker of lipid accumulation in diverse cell types and diseases.</p> <p>Alternatively spliced transcript variants have been found for this gene.</p>
Form	Lyophilized
Molecular Mass	49,03 kDa (calculated)
AA Sequence	<p>MKHHHHHHASVAVDPQPSVVTRVVNLPLVSSTYDLMSSAYLSTKDQYPYLKSVCEM AENGVKTITSVAMTSALPIIQKLEPQIAVANTYACKGLDRIEERLPILNQPSTQIVANAK GAVTGAKDAVTTTGTGAKDSVASTITGVMDKTKGAVTGSVEKTKSVVSGSINTVLGS</p>

 Tel: 1-631-559-9269 1-516-512-3133

 Email: info@creative-biomart.com  Fax: 1-631-938-8127

 45-1 Ramsey Road, Shirley, NY 11967, USA

RMMQLVSSGVENALTKSELLVEQYLPLTEEELEKEAKKVEGFDLVQKPSYYVRLGSL
 STKLHSRAYQQALSRVKEAKQKSQQTISQLHSTVHLIEFARKNVYSANQKIQDAQDK
 LYLSWVEWKRSIGYDDTDESHCAEHIESRTLAIARNLTQQLQTTCHTLLSNIQGV PQ
 NIQDQAKHMGVMAGDIYSVFRNAASFKEVSDSLLTSSKGQLQKMKESLDDVMDYLV
 NNTPLNWLVGPFYPQLTESQNAQDQGAEMDKSSQETQRSEHKTH

Purity > 95%

Applications WB

Quality Control Test BCA to determine quantity of the protein.
 SDS PAGE to determine purity of the protein.

Notes This product is intended for research use only.

Storage Store the lyophilized protein at –80 centigrade. Lyophilized protein remains stable until the expiry date when stored at –80 centigrade. Aliquot reconstituted protein to avoid repeated freezing/thawing cycles and store at –80 centigrade for long term storage. Reconstituted protein can be stored at 4 centigrade for a week.

Concentration 0.5 mg/mL

Storage Buffer Filtered (0.4 µm) in 20mM Tris buffer, 20mM NaCl, pH 7.5

Reconstitution Add deionized water to prepare a working stock solution of approximately 0.5 mg/mL and let the lyophilized pellet dissolve completely. Filter sterilize your culture media/working solutions containing this non-sterile product before using in cell culture.

Shipping At ambient temperature.

 Tel: 1-631-559-9269 1-516-512-3133

 Email: info@creative-biomart.com  Fax: 1-631-938-8127

 45-1 Ramsey Road, Shirley, NY 11967, USA

GENE INFORMATION

Gene Name PLIN2 perilipin 2 [Homo sapiens (human)]

Official Symbol PLIN2

Synonyms PLIN2; perilipin 2; ADFP; ADRP; perilipin-2; adipophilin; adipose differentiation-related protein

Gene ID 123

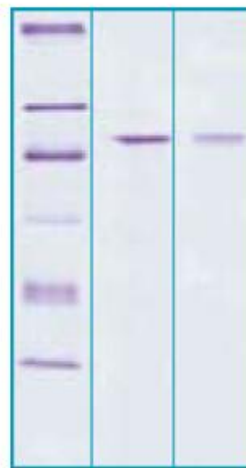
mRNA Refseq NM_001122

Protein Refseq NP_001113

MIM 103195

UniProt ID Q99541

**12% SDS-PAGE
separation of Human
Adipophilin**



 Tel: 1-631-559-9269 1-516-512-3133

 Email: info@creative-biomart.com  Fax: 1-631-938-8127

 45-1 Ramsey Road, Shirley, NY 11967, USA



1. M.W. marker-14, 21, 31, 45, 66, 97 kDa
2. reduced and heated sample, 5µg/lane
3. non-reduced and non-heated sample, 5µg/lane

 Tel: 1-631-559-9269 1-516-512-3133

 Email: info@creative-biomart.com  Fax: 1-631-938-8127

 45-1 Ramsey Road, Shirley, NY 11967, USA