

# Recombinant Human PLIN2 Protein, Myc/DDK-tagged, C13 and N15-labeled

**Cat. No.** PLIN2-3014H    **Lot. No.** (See product label)

## SPECIFICATION

<b>Product Overview</b>	PLIN2 MS Standard C13 and N15-labeled recombinant protein (NP_001113) with a C-terminal MYC/DDK tag, was expressed in HEK293 cells.
<b>Species</b>	Human
<b>Source</b>	HEK293
<b>Description</b>	<p>The protein encoded by this gene belongs to the perilipin family, members of which coat intracellular lipid storage droplets. This protein is associated with the lipid globule surface membrane material, and maybe involved in development and maintenance of adipose tissue. However, it is not restricted to adipocytes as previously thought, but is found in a wide range of cultured cell lines, including fibroblasts, endothelial and epithelial cells, and tissues, such as lactating mammary gland, adrenal cortex, Sertoli and Leydig cells, and hepatocytes in alcoholic liver cirrhosis, suggesting that it may serve as a marker of lipid accumulation in diverse cell types and diseases.</p> <p>Alternatively spliced transcript variants have been found for this gene.</p>
<b>Molecular Mass</b>	47.9 kDa
<b>AA Sequence</b>	<p>MASVAVDPQPSVVTRVVNLPLVSSTYDLMSSAYLSTKDQYPYLKSVCEMAENGVKT            ITSVAMTSALPIIQKLEPQIAVANTYACKGLDRIEERLPILNQPSTQIVANAKGAVTGAK            DAVTTTTVTGAKDSVASTITGVMDKTKGAVTGSVEKTKSVVSGSINTVLGSRMMQLVS            SGVENALTKSELLVEQYLPLTEEELEKEAKKVEGFDLVQKPSYYVRLGSLSTKLHSR</p>

 Tel: 1-631-559-9269    1-516-512-3133

 Email: [info@creative-biomart.com](mailto:info@creative-biomart.com)     Fax: 1-631-938-8127

 45-1 Ramsey Road, Shirley, NY 11967, USA

AYQQALSRVKEAKQKSQQTISQLHSTVHLIEFARKNVYSANQKIQDAQDKLYLSWVE  
 WKRSIGYDDTDESHCAEHIESRTLAIARNLTQQLQTTCHTLLSNIQGVQPQNIQDQAKH  
 MGVMAGDIYSVFRNAASFKEVSDSLLTSSKGQLQKMKESLDDVMDYLVNNTPLNWL  
 VGPFPQLTESQNAQDQGAEMDKSSQETQRSEHKHTHRTRPLEQKLISEEDLAAND  
 ILDYKDDDDKV

**Purity** > 80% as determined by SDS-PAGE and Coomassie blue staining

**Stability** Stable for 3 months from receipt of products under proper storage and handling conditions.

**Storage** Store at -80 centigrade. Avoid repeated freeze-thaw cycles.

**Concentration** 50 µg/mL as determined by BCA

**Storage Buffer** 100 mM glycine, 25 mM Tris-HCl, pH 7.3.

## GENE INFORMATION

**Gene Name** [PLIN2 perilipin 2 \[ Homo sapiens \(human\) \]](#)

**Official Symbol** [PLIN2](#)

**Synonyms** PLIN2; perilipin 2; ADFP, adipose differentiation related protein; perilipin-2; adipophilin; ADRP; adipose differentiation-related protein; ADFP; MGC10598;

**Gene ID** [123](#)

**mRNA Refseq** [NM\\_001122](#)

**Protein Refseq** [NP\\_001113](#)

 Tel: 1-631-559-9269 1-516-512-3133

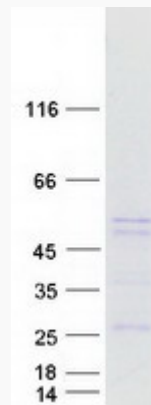
 Email: [info@creative-biomart.com](mailto:info@creative-biomart.com)  Fax: 1-631-938-8127

 45-1 Ramsey Road, Shirley, NY 11967, USA

**MIM** 103195

**UniProt ID** Q99541

**SDS-PAGE**



 Tel: 1-631-559-9269 1-516-512-3133

 Email: [info@creative-biomart.com](mailto:info@creative-biomart.com)  Fax: 1-631-938-8127

 45-1 Ramsey Road, Shirley, NY 11967, USA