

# Recombinant Human PLK1 Protein, MYC/DDK-tagged, C13 and N15-labeled

**Cat. No.** PLK1-352H    **Lot. No.** (See product label)

## SPECIFICATION

<b>Product Overview</b>	PLK1 MS Standard C13 and N15-labeled recombinant protein (NP_005021) with a C-terminal MYC/DDK tag, was expressed in HEK293 cells.
<b>Species</b>	Human
<b>Source</b>	HEK293
<b>Description</b>	The Ser/Thr protein kinase encoded by this gene belongs to the CDC5/Polo subfamily. It is highly expressed during mitosis and elevated levels are found in many different types of cancer. Depletion of this protein in cancer cells dramatically inhibited cell proliferation and induced apoptosis; hence, it is a target for cancer therapy. [provided by RefSeq, Sep 2015]
<b>Molecular Mass</b>	68.1 kDa
<b>AA Sequence</b>	MSAAVTAGKLARAPADPGKAGVPGVAAPGAPAAAPPAKEIPEVLVDPRSRRRYVVG RFLGKGGFAKCFEISDADTKEVFAGKIVPKSLLLKPHQREKMSMEISIHRS LAHQHV GFHGGFFEDNFVVFVLELCRRRSLLELHKRRKALTEPEARYYLRQIVLGCQYLHRNR VIHRDLKLG NLFNEDLEV KIGDFGLATKVEYDGERKKTLCGTPNYIAPEVLSKKGHS FEVDVWSIGCIMYLLVGKPPFETSCLKETYLR I KKNEYSIPKHINPVAASLIQKMLQT DPTARPTINELLNDEFFTSGYIPARLPITCLTIPPRFSIAPSSLDPSNRKPLTVLNKGLE NPLPERPREKEEPVVRETGEVVDCHLSDMLQQLHSVNASKPSEGLVRQEEAEDP ACIPIFWVSKWVDYSDKYGLGYQLCDNSVGVLFNDSTRILYNDGDSLQYIERDGTE

 Tel: 1-631-559-9269    1-516-512-3133

 Email: [info@creative-biomart.com](mailto:info@creative-biomart.com)     Fax: 1-631-938-8127

 45-1 Ramsey Road, Shirley, NY 11967, USA

SYLTVSSHPNSLMKKITLLKYFRNYMSEHLLKAGANITPREGDELARLPYLRTWFRTR  
 SAILHLSNGSVQINFFQDHTKLILCPLMAAVTYIDEKRDFRTYRLSLL EYGCCKELA  
 SRLRYARTMVDKLLSSRSASNRLKASTRTRPLEQKLISEEDLAANDILDYKDDDDKV

**Purity** > 80% as determined by SDS-PAGE and Coomassie blue staining

**Stability** Stable for 3 months from receipt of products under proper storage and handling conditions.

**Storage** Store at -80 centigrade. Avoid repeated freeze-thaw cycles.

**Concentration** 50 µg/mL as determined by BCA

**Storage Buffer** 100 mM glycine, 25 mM Tris-HCl, pH 7.3.

## GENE INFORMATION

**Gene Name** [PLK1 polo-like kinase 1 \[ Homo sapiens \(human\) \]](#)

**Official Symbol** [PLK1](#)

**Synonyms** PLK1; polo-like kinase 1; PLK, polo like kinase (Drosophila); serine/threonine-protein kinase PLK1; PLK-1; polo like kinase; polo (Drosophila)-like kinase; serine/threonine-protein kinase 13; cell cycle regulated protein kinase; PLK; STPK13;

**Gene ID** [5347](#)

**mRNA Refseq** [NM\\_005030](#)

**Protein Refseq** [NP\\_005021](#)

 Tel: 1-631-559-9269 1-516-512-3133

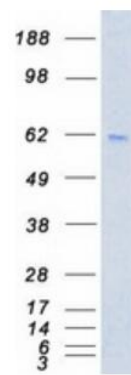
 Email: [info@creative-biomart.com](mailto:info@creative-biomart.com)  Fax: 1-631-938-8127

 45-1 Ramsey Road, Shirley, NY 11967, USA

**MIM** 602098

**UniProt ID** P53350

**SDS-PAGE**



 Tel: 1-631-559-9269 1-516-512-3133

 Email: [info@creative-biomart.com](mailto:info@creative-biomart.com)  Fax: 1-631-938-8127

 45-1 Ramsey Road, Shirley, NY 11967, USA