

# Active Recombinant Full Length Human PLK1 Protein, GST-tagged

Cat. No. PLK1-7304HF    Lot. No. (See product label)

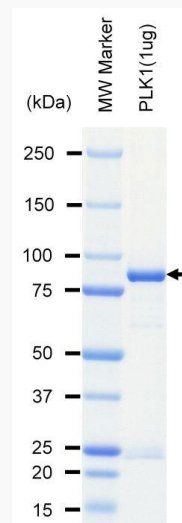
## SPECIFICATION

<b>Product Overview</b>	Full-length human PLK1 [1-603(end) amino acids of accession number NP_005021.2] was expressed as N-terminal GST-fusion protein (95 kDa) using baculovirus expression system. GST-PLK1 was purified by using glutathione sepharose chromatography.
<b>Species</b>	Human
<b>Source</b>	Sf21 Cells
<b>ProteinLength</b>	1-603(end)
<b>Form</b>	50 mM Tris-HCl, 150 mM NaCl, 0.1% CHAPS, 1 mM DTT, 10% glycerol, pH 7.5
<b>Bio-activity</b>	The activity was measured by off-chip mobility shift assay. The enzyme was incubated with fluorescence-labeled substrate and Mg(or Mn)/ATP. The phosphorylated and unphosphorylated substrates were separated and detected by LabChip™3000.
<b>Purity</b>	84%
<b>Applications</b>	SDS-PAGE
<b>Storage</b>	Store at -80C. Avoid repeating freeze-thaws.

 Tel: 1-631-559-9269    1-516-512-3133

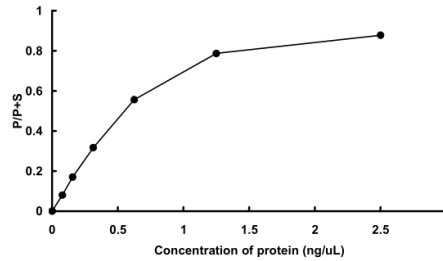
 Email: [info@creative-biomart.com](mailto:info@creative-biomart.com)     Fax: 1-631-938-8127

 45-1 Ramsey Road, Shirley, NY 11967, USA

**GENE INFORMATION****Gene Name** polo-like kinase 1**Official Symbol** PLK1**Synonyms** PLK1;PLK;STPK13**Protein Refseq** [NP\\_005021.2](#)**UniProt ID** [P53350](#)**SDS-PAGE**

The purity was assessed by SDS-PAGE/CBB staining.

 Tel: 1-631-559-9269 1-516-512-3133 Email: [info@creative-biomart.com](mailto:info@creative-biomart.com)  Fax: 1-631-938-8127 45-1 Ramsey Road, Shirley, NY 11967, USA

**Activity data****Activity data**

The activity was measured by off-chip mobility shift assay. The enzyme was incubated with fluorescence-labeled substrate and Mg(or Mn)/ATP. The phosphorylated and unphosphorylated substrates were separated and detected by LabChip™3000.

Tel: 1-631-559-9269 1-516-512-3133

Email: [info@creative-biomart.com](mailto:info@creative-biomart.com) Fax: 1-631-938-8127

45-1 Ramsey Road, Shirley, NY 11967, USA