

Recombinant Human PLK2 Protein, Myc/DDK-tagged, C13 and N15-labeled

Cat. No. PLK2-3256H Lot. No. (See product label)

SPECIFICATION

Product Overview

PLK2 MS Standard C13 and N15-labeled recombinant protein (NP_006613) with a C-terminal MYC/DDK tag, was expressed in HEK293 cells.

Species

Human

Source

HEK293

Description

The protein encoded by this gene is a member of the polo family of serine/threonine protein kinases that have a role in normal cell division. This gene is most abundantly expressed in testis, spleen and fetal tissues, and its expression is inducible by serum, suggesting that it may also play an important role in cells undergoing rapid cell division. Alternatively spliced transcript variants encoding different isoforms have been found for this gene.

Molecular Mass

78.1 kDa

AA Sequence

MELLRTITYQPAASTKMCEQALGKGCADSKKKRPPQPPEESQPPQSQAQVPPAA
PHHHHHHSHSGPEISRIIVDPTTGKRYCRGKVLGKGGFAKCYEMDLTNNKVYAAKII
PHSRVAKPHQREKIDKEIELHRILHHKHVVQFYHYFEDKENIYILLEYCSRRSMAHILK
ARKVLTEPEVRYLRLQIVSGLKYLHEQEILHRDLKLGFFINEAMELVGDFGLAARL
EPLHRRRTICGTPNYLSPEVLNKQGHGCESDIWALGCVMYTMLLGRPPFETTNLK
ETYRCIREARYTMPSSLLAPAKHLIASMLSKNPEDRPSLDDIIRHDFFLQGFTPDRLS
SSCCHTVPDFHLSSPAKNFFKAAAALFGGKKDKARYIDTHNRVSKEDEDIYKLRHD

Tel: 1-631-559-9269 1-516-512-3133

Email: info@creative-biomart.com Fax: 1-631-938-8127

45-1 Ramsey Road, Shirley, NY 11967, USA

LKKTSTITQQPSKHRTDEELQPPTTTVARSGTPAVENKQQIGDAIRMIVRGTGSCSSS
 SECLEDSTMGSVADTVARVLRGCLNMPEADCIPKEQLSTSFQWVTKWVDYSNKY
 GFGYQLSDHTVGVLFNNGAHMSLLPDKKTVHYAELGQCSVFPATDAPEQFISQVT
 VLKYFSHYMEENLMDGGDLPSVTDIRRPRLYLLQWLKSDKALMMLFNDGTFQVNFY
 HDHTKIICSQNEEYLLTYINEDRISTTFRLTLLMSGCSSELKNRMEYALNMLLQRCN
 TRTRPLEQKLISEEDLAANDILDYKDDDDKV

Purity > 80% as determined by SDS-PAGE and Coomassie blue staining

Stability Stable for 3 months from receipt of products under proper storage and handling conditions.

Storage Store at -80 centigrade. Avoid repeated freeze-thaw cycles.

Concentration 50 µg/mL as determined by BCA

Storage Buffer 100 mM glycine, 25 mM Tris-HCl, pH 7.3.

GENE INFORMATION

Gene Name [PLK2 polo-like kinase 2 \[Homo sapiens \(human\) \]](#)

Official Symbol [PLK2](#)

Synonyms PLK2; polo-like kinase 2; polo like kinase 2 (Drosophila); serine/threonine-protein kinase PLK2; serum inducible kinase; SNK; PLK-2; serum-inducible kinase; serine/threonine-protein kinase SNK; hSNK; hPlk2;

Gene ID [10769](#)

mRNA Refseq [NM_006622](#)

 Tel: 1-631-559-9269 1-516-512-3133

 Email: info@creative-biomart.com  Fax: 1-631-938-8127

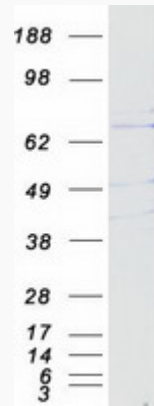
 45-1 Ramsey Road, Shirley, NY 11967, USA

Protein Refseq NP_006613

MIM 607023

UniProt ID Q9NYY3

SDS-PAGE



 Tel: 1-631-559-9269 1-516-512-3133

 Email: info@creative-biomart.com  Fax: 1-631-938-8127

 45-1 Ramsey Road, Shirley, NY 11967, USA