

Active Recombinant Full Length Human PLK2 Protein, GST-tagged

Cat. No. PLK2-3367HF Lot. No. (See product label)

SPECIFICATION

Product Overview	Full-length human PLK2 [1-685(end) amino acids of accession number NP_006613.2] was expressed as N-terminal GST-fusion protein (105 kDa) using baculovirus expression system. GST-PLK2 was purified by using glutathione sepharose chromatography.
Species	Human
Source	Sf21 Cells
ProteinLength	1-685
Form	50 mM Tris-HCl, 150 mM NaCl, 0.05% Brij35, 1 mM DTT, 10% glycerol, pH7.5
Bio-activity	The activity was determined by IMAP™ assay. The enzyme was incubated with fluorescein labeled peptide and phosphorylation was detected by IMAP™ technology (fluorescence polarization).
Purity	81%
Applications	SDS-PAGE
Storage	Store at -80C. Avoid repeating freeze-thaws.

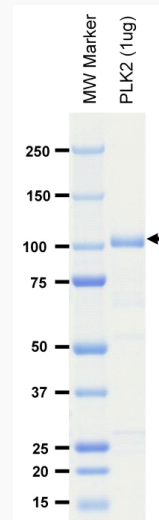
GENE INFORMATION

 Tel: 1-631-559-9269 1-516-512-3133

 Email: info@creative-biomart.com  Fax: 1-631-938-8127

 45-1 Ramsey Road, Shirley, NY 11967, USA

Gene Name	polo-like kinase 2
Official Symbol	PLK2
Synonyms	PLK2;SNK;hPlk2;hSNK
Protein Refseq	NP_006613.2
UniProt ID	Q9NYY3

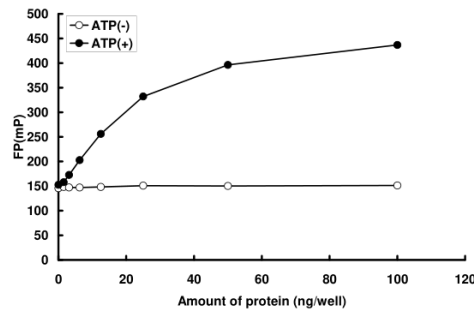
SDS-PAGE

The purity was assessed by SDS-PAGE/CBB staining.

 Tel: 1-631-559-9269 1-516-512-3133

 Email: info@creative-biomart.com  Fax: 1-631-938-8127

 45-1 Ramsey Road, Shirley, NY 11967, USA

Activity data**Activity data**

The activity was determined by IMAP™ assay. The enzyme was incubated with fluorescein labeled peptide and phosphorylation was detected by IMAP™ technology (fluorescence polarization).

Tel: 1-631-559-9269 1-516-512-3133

Email: info@creative-biomart.com Fax: 1-631-938-8127

45-1 Ramsey Road, Shirley, NY 11967, USA