

# Recombinant Human PLS1 Protein, Myc/DDK-tagged, C13 and N15-labeled

Cat. No. PLS1-2344H Lot. No. (See product label)

## SPECIFICATION

<b>Product Overview</b>	PLS1 MS Standard C13 and N15-labeled recombinant protein (NP_002661) with a C-terminal MYC/DDK tag, was expressed in HEK293 cells.
<b>Species</b>	Human
<b>Source</b>	HEK293
<b>Description</b>	Plastins are a family of actin-binding proteins that are conserved throughout eukaryote evolution and expressed in most tissues of higher eukaryotes. In humans, two ubiquitous plastin isoforms (L and T) have been identified. The protein encoded by this gene is a third distinct plastin isoform, which is specifically expressed at high levels in the small intestine. Alternatively spliced transcript variants varying in the 5' UTR, but encoding the same protein, have been found for this gene. A pseudogene of this gene is found on chromosome 11.
<b>Molecular Mass</b>	70.3 kDa
<b>AA Sequence</b>	MENSTTTISREELEELQEAFNKIDIDNSGYVSDYELQDLFKEASLPLPGYKVVREIVEKILSVADSNKDGKISFEFVSLMQELKSKDISKTRFKIINKREGITAIGGTSTISSEGTQHSYSEEEKVAFVNWINKALENDPDCCKHLIPMNPNDDSLKSLADGILLCKMINLSEPDITDERAINKKKLTPTFISENLNLALNSASAIGCTVVNIGASDLKEGKPHLVLGLLWQIIKVGLFADIEISRNEALIALLEEGEELEELMKLSPEELLRWVNYHLTNAGWHTISNFSQDIKDSRAYFHLLNQUIAPKGGEDGPAIAIDLGINETNDLKRAGLMLQEADKLGCKQFVTPA

 Tel: 1-631-559-9269 1-516-512-3133

 Email: [info@creative-biomart.com](mailto:info@creative-biomart.com)  Fax: 1-631-938-8127

 45-1 Ramsey Road, Shirley, NY 11967, USA

DVVSGNPKLNLAFFVANLNFNTYPC LHKPNNDIDMNLLEGESKEERTFRNWMNSLGV  
 NPYINHLYSDLADALVIFQLYEMIRVPVNWRHVNKPPYPALGGNMKKIENCNYAVEL  
 GKNKAKFSLVGIAGQDLNEGNSTLTLALVWQLMRRYTLNVLSDLGEGEKVNDEIIK  
 WVNQTLKSANKKTSISSFKDKSISTSLPVLDLIDAIAPNAVRQEMIRRENLSDEDKLN  
 AKYAISVARKIGARIYALPDDLVEVKPKMVMTVFACLMGKGLNRIKTRTRPLEQKLI  
 EDLAANDILDYKDDDDKV

**Purity** > 80% as determined by SDS-PAGE and Coomassie blue staining

**Stability** Stable for 3 months from receipt of products under proper storage and handling conditions.

**Storage** Store at -80 centigrade. Avoid repeated freeze-thaw cycles.

**Concentration** 50 µg/mL as determined by BCA

**Storage Buffer** 100 mM glycine, 25 mM Tris-HCl, pH 7.3.

## GENE INFORMATION

**Gene Name** [PLS1 plastin 1 \[ Homo sapiens \(human\) \]](#)

**Official Symbol** [PLS1](#)

**Synonyms** PLS1; platin 1; platin 1 (I isoform); platin-1; I platin; Platin 1; fimbrin; intestine specific platin; intestine-specific platin;

**Gene ID** [5357](#)

**mRNA Refseq** [NM\\_002670](#)

 Tel: 1-631-559-9269 1-516-512-3133

 Email: [info@creative-biomart.com](mailto:info@creative-biomart.com)  Fax: 1-631-938-8127

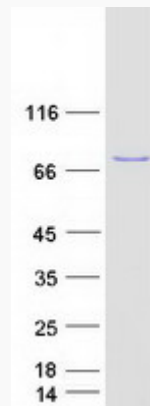
 45-1 Ramsey Road, Shirley, NY 11967, USA

**Protein Refseq**      NP\_002661

**MIM**                    602734

**UniProt ID**            Q14651

**SDS-PAGE**



 Tel: 1-631-559-9269    1-516-512-3133

 Email: [info@creative-biomart.com](mailto:info@creative-biomart.com)     Fax: 1-631-938-8127

 45-1 Ramsey Road, Shirley, NY 11967, USA