

Recombinant Human PLS1 Protein, His-tagged

Cat. No. PLS1-2598H **Lot. No.** (See product label)

SPECIFICATION

Product Overview	Recombinant Human PLS1 Protein (Thr108-Lys380) with a N-His tag was expressed in E. coli.
Species	Human
Source	E.coli
ProteinLength	Thr108-Lys380
Description	<p>Plastins are a family of actin-binding proteins that are conserved throughout eukaryote evolution and expressed in most tissues of higher eukaryotes. In humans, two ubiquitous plastin isoforms (L and T) have been identified. The protein encoded by this gene is a third distinct plastin isoform, which is specifically expressed at high levels in the small intestine. Alternatively spliced transcript variants varying in the 5' UTR, but encoding the same protein, have been found for this gene. A pseudogene of this gene is found on chromosome 11.</p>
Form	Freeze-dried powder
Molecular Mass	<p>Predicted Molecular Mass: 33.8 kDa Accurate Molecular Mass: 34 kDa</p>
Endotoxin	<1.0 EU per 1g (determined by the LAL method).
Purity	> 97%

 Tel: 1-631-559-9269 1-516-512-3133

 Email: info@creative-biomart.com  Fax: 1-631-938-8127

 45-1 Ramsey Road, Shirley, NY 11967, USA

Applications	Positive Control; Immunogen; SDS-PAGE; WB.
Stability	The thermal stability is described by the loss rate. The loss rate was determined by accelerated thermal degradation test, that is, incubate the protein at 37 centigrade for 48h, and no obvious degradation and precipitation were observed. The loss rate is less than 5% within the expiration date under appropriate storage condition.
Storage	Avoid repeated freeze/thaw cycles. Store at 2-8 centigrade for one month. Aliquot and store at -80 centigrade for 12 months.
Storage Buffer	PBS, pH7.4, containing 0.01% SKL, 1mM DTT, 5% Trehalose and Proclin300.
Reconstitution	Reconstitute in 20mM Tris, 150mM NaCl (pH8.0) to a concentration of 0.1-1.0 mg/mL. Do not vortex.

GENE INFORMATION

Gene Name	PLS1 plastin 1 [Homo sapiens (human)]
Official Symbol	PLS1
Synonyms	PLS1; plastin 1; plastin 1 (I isoform); plastin-1; I plastin; Plastin 1; fimbrin; intestine specific plastin; intestine-specific plastin;
Gene ID	5357
mRNA Refseq	NM_001145319
Protein Refseq	NP_001138791
MIM	602734

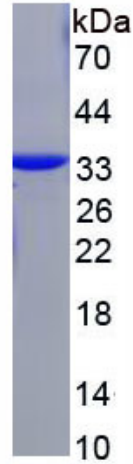
 Tel: 1-631-559-9269 1-516-512-3133

 Email: info@creative-biomart.com  Fax: 1-631-938-8127

 45-1 Ramsey Road, Shirley, NY 11967, USA

UniProt ID

Q14651



 Tel: 1-631-559-9269 1-516-512-3133

 Email: info@creative-biomart.com  Fax: 1-631-938-8127

 45-1 Ramsey Road, Shirley, NY 11967, USA