

Recombinant Human PLTP Protein (18-493 aa), His-tagged

Cat. No. PLTP-1490H Lot. No. (See product label)

SPECIFICATION

Product Overview	Recombinant Human PLTP Protein (18-493 aa) is produced by Yeast expression system. This protein is fused with a 6xHis tag at the N-terminal. Research Area: Transport. Protein Description: Full Length of Mature Protein.
Species	Human
Source	Yeast
ProteinLength	18-493 aa
Description	Facilitates the transfer of a spectrum of different lipid molecules, including diacylglycerol, phosphatidic acid, sphingomyelin, phosphatidylcholine, phosphatidylglycerol, cerebroside and phosphatidyl ethanolamine. Essential for the transfer of excess surface lipids from triglyceride-rich lipoproteins to HDL, thereby facilitating the formation of smaller lipoprotein rnants, contributing to the formation of LDL, and assisting in the maturation of HDL particles. PLTP also plays a key role in the uptake of cholesterol from peripheral cells and tissues that is subsequently transported to the liver for degradation and excretion. Two distinct forms of PLTP exist in plasma: an active form that can transfer PC from phospholipid vesicles to high-density lipoproteins (HDL), and an inactive form that lacks this capability.
Form	Tris-based buffer,50% glycerol
Molecular Mass	55.1 kDa

 Tel: 1-631-559-9269 1-516-512-3133

 Email: info@creative-biomart.com  Fax: 1-631-938-8127

 45-1 Ramsey Road, Shirley, NY 11967, USA

AA Sequence

EFPGCKIRVTSKALELVKQEGLRFLEQELETITIPDLRGKEGHFYFNISEVKVTELQLT
 SSELDQFQQELMLQITNASLGLRFRRQLLYWFFYDGGYINASAEGVSIRTGLELSR
 DPAGRMKVSNSVCQASVSRMHAAFGGTFKKVYDFLSTFITSGMRFLNQQICPVLY
 HAGTVLLNSLLDTPVVRSSVDELVGIDYSLMKDPVASTSNLDMDFRGAFFPLTERNW
 SLPNRAVEPQLQEEERMVYVAFSEFFFDSSAMESYFRAGALQLLLVGDKVPDLDML
 LRATYFGSIVLLSPAVIDSPLKLELRVLAPPRCTIKPSGTTISVTASVTIALVPPDQPEV
 QLSSMTMDARLSAKMALRGKALRTQLDLRRFRIYSNHSALSLALIPLQAPLKTMLQI
 GVMPMLNERTWRGVQIPLPEGINFVHEVVTNHAGFLTIGADLHFAKGLREVIEKNRP
 ADVRASTAPTSTAAV

Purity > 90% as determined by SDS-PAGE.

Notes Repeated freezing and thawing is not recommended. Store working aliquots at 4 centigrade for up to one week.

Storage The shelf life is related to many factors, storage state, buffer ingredients, storage temperature and the stability of the protein itself. Generally, the shelf life of liquid form is 6 months at -20 centigrade/-80 centigrade. The shelf life of lyophilized form is 12 months at -20 centigrade/-80 centigrade.

Concentration A hardcopy of COA with reconstitution instruction is sent along with the products.

GENE INFORMATION

Gene Name [PLTP phospholipid transfer protein \[Homo sapiens \]](#)

Official Symbol [PLTP](#)

Synonyms PLTP; BPIFE; lipid transfer protein II; HDLCQ9;

Gene ID [5360](#)

 Tel: 1-631-559-9269 1-516-512-3133

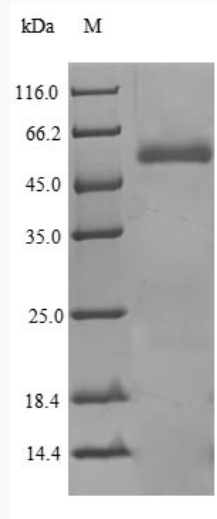
 Email: info@creative-biomart.com  Fax: 1-631-938-8127

 45-1 Ramsey Road, Shirley, NY 11967, USA

mRNA Refseq [NM_001242920](#)

Protein Refseq [NP_001229849](#)

UniProt ID [P55058](#)



(Tris-Glycine gel) Discontinuous SDS-PAGE (reduced) with 5% enrichment gel and 15% separation gel.

 Tel: 1-631-559-9269 1-516-512-3133

 Email: info@creative-biomart.com  Fax: 1-631-938-8127

 45-1 Ramsey Road, Shirley, NY 11967, USA