

Recombinant Human PLTP Protein, Myc/DDK-tagged, C13 and N15-labeled

Cat. No. PLTP-1736H **Lot. No.** (See product label)

SPECIFICATION

Product Overview	PLTP MS Standard C13 and N15-labeled recombinant protein (NP_006218) with a C-terminal MYC/DDK tag, was expressed in HEK293 cells.
Species	Human
Source	HEK293
Description	The protein encoded by this gene is one of at least two lipid transfer proteins found in human plasma. The encoded protein transfers phospholipids from triglyceride-rich lipoproteins to high density lipoprotein (HDL). In addition to regulating the size of HDL particles, this protein may be involved in cholesterol metabolism. At least two transcript variants encoding different isoforms have been found for this gene.
Molecular Mass	54.7 kDa
AA Sequence	MALFGALFLALLAGAHAVFPGCKIRVTSKALELVKQEGLRFLEQELETITIPDLRGKEG HFYYNISEVKVTELQLTSSSELDQFQQELMLQITNASLGLRFRRQLLYWFFYDGGYIN ASAEVGSIRTGLELSRDPAGRMKVSNSVSCQASVSRMHAAFGGTFKKVYDFLSTFITS GMRFLNQQICPVLYHAGTVLLNSLLDTPVVRSSVDELVGIDYSMLKDPVASTSNLD MDFRGAFFPLTERNWSLPNRAVEPQLQEEERMVYVAFSEFFFDAMESYFRAGAL QLLLVGDKVPHDLMLLRATYFGSIVLLSPAVIDSPLKLELRVLAPPRCTIKPSGTTISV TASVTIALVPPDQPEVQLSSMTMDARLSAKMALRGKALRTQLDLRRFRIYSNHSALE SLALIPLQAPLKTMLQIGVMPMLNERTWRGVQIPLPEGINFVHEVVTNHAGFLTIGAD

 Tel: 1-631-559-9269 1-516-512-3133

 Email: info@creative-biomart.com  Fax: 1-631-938-8127

 45-1 Ramsey Road, Shirley, NY 11967, USA

LHFAKGLREVIEKNRPADVRASTAPTSTAAVTRTRPLEQKLISEEDLAANDILDYKD
DDDKV

Purity > 80% as determined by SDS-PAGE and Coomassie blue staining

Stability Stable for 3 months from receipt of products under proper storage and handling conditions.

Storage Store at -80 centigrade. Avoid repeated freeze-thaw cycles.

Concentration 50 µg/mL as determined by BCA

Storage Buffer 100 mM glycine, 25 mM Tris-HCl, pH 7.3.

GENE INFORMATION

Gene Name [PLTP phospholipid transfer protein \[Homo sapiens \(human\) \]](#)

Official Symbol [PLTP](#)

Synonyms PLTP; phospholipid transfer protein; BPI fold containing family E; BPIFE; lipid transfer protein II; HDLCQ9;

Gene ID [5360](#)

mRNA Refseq [NM_006227](#)

Protein Refseq [NP_006218](#)

MIM [172425](#)

 Tel: 1-631-559-9269 1-516-512-3133

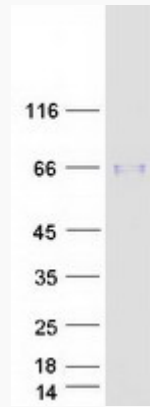
 Email: info@creative-biomart.com  Fax: 1-631-938-8127

 45-1 Ramsey Road, Shirley, NY 11967, USA

UniProt ID

P55058

SDS-PAGE



 Tel: 1-631-559-9269 1-516-512-3133

 Email: info@creative-biomart.com  Fax: 1-631-938-8127

 45-1 Ramsey Road, Shirley, NY 11967, USA