

Recombinant Human PLTP Protein, His-tagged

Cat. No. PLTP-2600H Lot. No. (See product label)

SPECIFICATION

Product Overview	Recombinant Human PLTP Protein (Val164-Val493) with a N-His tag was expressed in E. coli.
Species	Human
Source	E.coli
ProteinLength	Val164-Val493
Description	The protein encoded by this gene is one of at least two lipid transfer proteins found in human plasma. The encoded protein transfers phospholipids from triglyceride-rich lipoproteins to high density lipoprotein (HDL). In addition to regulating the size of HDL particles, this protein may be involved in cholesterol metabolism. At least two transcript variants encoding different isoforms have been found for this gene.
Form	Freeze-dried powder
Molecular Mass	Predicted Molecular Mass: 36.5 kDa
Endotoxin	<1.0 EU per 1g (determined by the LAL method).
Purity	> 97%
Applications	Positive Control; Immunogen; SDS-PAGE; WB.

 Tel: 1-631-559-9269 1-516-512-3133

 Email: info@creative-biomart.com  Fax: 1-631-938-8127

 45-1 Ramsey Road, Shirley, NY 11967, USA

Stability	The thermal stability is described by the loss rate. The loss rate was determined by accelerated thermal degradation test, that is, incubate the protein at 37 centigrade for 48h, and no obvious degradation and precipitation were observed. The loss rate is less than 5% within the expiration date under appropriate storage condition.
Storage	Avoid repeated freeze/thaw cycles. Store at 2-8 centigrade for one month. Aliquot and store at -80 centigrade for 12 months.
Storage Buffer	PBS, pH7.4, containing 0.01% SKL, 1mM DTT, 5% Trehalose and Proclin300.
Reconstitution	Reconstitute in 20mM Tris, 150mM NaCl (pH8.0) to a concentration of 0.1-1.0 mg/mL. Do not vortex.

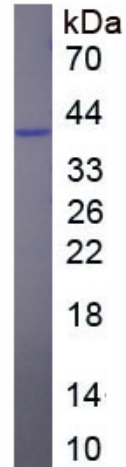
GENE INFORMATION

Gene Name	PLTP phospholipid transfer protein [Homo sapiens (human)]
Official Symbol	PLTP
Synonyms	PLTP; phospholipid transfer protein; BPI fold containing family E; BPIFE; lipid transfer protein II; HDLCQ9;
Gene ID	5360
mRNA Refseq	NM_001242920
Protein Refseq	NP_001229849
MIM	172425
UniProt ID	P55058

 Tel: 1-631-559-9269 1-516-512-3133

 Email: info@creative-biomart.com  Fax: 1-631-938-8127

 45-1 Ramsey Road, Shirley, NY 11967, USA



Tel: 1-631-559-9269 1-516-512-3133

Email: info@creative-biomart.com Fax: 1-631-938-8127

45-1 Ramsey Road, Shirley, NY 11967, USA