

Recombinant Human PLTP protein, His-tagged

Cat. No. PLTP-3781H Lot. No. (See product label)

SPECIFICATION

Product Overview	Recombinant Human PLTP protein(P55058-1) (Met 1-Val 493) was expressed in HEK293, fused with a polyhistidine tag at the C-terminus.
Species	Human
Source	HEK293
ProteinLength	1-493 aa
Form	Lyophilized from sterile PBS, pH 7.4.
Molecular Mass	The secreted recombinant human PLTP consists of 487 amino acids after removal of the signal peptide and has a predicted molecular mass of 54.5 kDa. As a result of glycosylation, the apparent molecular masss of rh PLTP is approximately 70-80 kDa in SDS-PAGE under reducing conditions.
Endotoxin	< 1.0 EU per µg of the protein as determined by the LAL method.
Purity	> 80 % as determined by SDS-PAGE
Storage	Store it under sterile conditions at -20°C to -80°C upon receiving. Recommend to aliquot the protein into smaller quantities for optimal storage. Avoid repeated freeze-thaw cycles.
Reconstitution	It is recommended that sterile water be added to the vial to prepare a stock solution of

 Tel: 1-631-559-9269 1-516-512-3133

 Email: info@creative-biomart.com  Fax: 1-631-938-8127

 45-1 Ramsey Road, Shirley, NY 11967, USA

0.2 ug/ul. Centrifuge the vial at 4°C before opening to recover the entire contents.

protein Refseq-Weblink http://www.ncbi.nlm.nih.gov/protein/NP_001229849.1

Unit ID P55058

Unit ID-Weblink <https://www.uniprot.org/uniprotkb/P55058>

GENE INFORMATION

Gene Name [PLTP phospholipid transfer protein \[Homo sapiens \]](#)

Official Symbol [PLTP](#)

Synonyms PLTP; phospholipid transfer protein; BPI fold containing family E; BPIFE; lipid transfer protein II; HDLCQ9;

Gene ID [5360](#)

mRNA Refseq [NM_001242920](#)

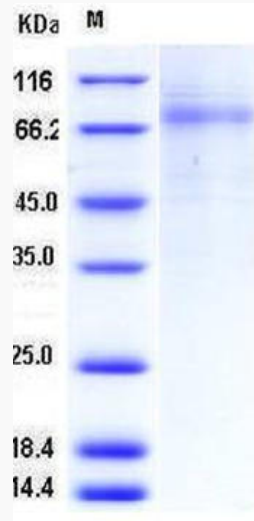
protein Refseq [NP_001229849](#)

 Tel: 1-631-559-9269 1-516-512-3133

 Email: info@creative-biomart.com  Fax: 1-631-938-8127

 45-1 Ramsey Road, Shirley, NY 11967, USA

SDS-PAGE



 Tel: 1-631-559-9269 1-516-512-3133

 Email: info@creative-biomart.com  Fax: 1-631-938-8127

 45-1 Ramsey Road, Shirley, NY 11967, USA