

## Recombinant Human PLVAP protein, His-tagged

Cat. No. PLVAP-1516H Lot. No. (See product label)

### SPECIFICATION

<b>Product Overview</b>	Recombinant Human PLVAP protein(Q9BX97)(Tyr49-Gly442), fused with N-terminal His tag, was expressed in HEK293.
<b>Species</b>	Human
<b>Source</b>	N-His
<b>ProteinLength</b>	Tyr49-Gly442
<b>Tag</b>	N-His
<b>Form</b>	Lyophilized from 0.22µm filtered solution in PBS, 200mM L-arginine (pH 7.4). Normally 8% trehalose is added as protectant before lyophilization.
<b>Bio-activity</b>	
<b>Molecular Mass</b>	The protein has a predicted MW of 45.97 kDa. Due to glycosylation, the protein migrates to 50-70 kDa based on Tris-Bis PAGE result.
<b>Endotoxin</b>	Less than 1EU per µg by the LAL method.
<b>Purity</b>	> 95% as determined by Tris-Bis PAGE; > 90% as determined by HPLC.
<b>Storage</b>	Reconstituted protein stable at -80°C for 12 months, 4°C for 1 week. Use a manual defrost freezer and avoid repeated freeze-thaw cycles.

 Tel: 1-631-559-9269 1-516-512-3133

 Email: [info@creative-biomart.com](mailto:info@creative-biomart.com)  Fax: 1-631-938-8127

 45-1 Ramsey Road, Shirley, NY 11967, USA

**Reconstitution** Centrifuge tubes before opening. Reconstituting to a concentration more than 100 µg/ml is recommended. Dissolve the lyophilized protein in distilled water.

## GENE INFORMATION

**Gene Name** [PLVAP plasmalemma vesicle associated protein \[ Homo sapiens \]](#)

**Official Symbol** [PLVAP](#)

**Synonyms** PLVAP; plasmalemma vesicle associated protein; plasmalemma vesicle-associated protein; FELS; fenestrated endothelial linked structure protein; PV 1 protein; gp68; PV 1; PV1; plasmalemma vesicle protein 1; fenestrated endothelial-linked structure protein; fenestrated-endothelial linked structure protein; PV-1 protein; PV-1;

**Gene ID** [83483](#)

**mRNA Refseq** [NM\\_031310](#)

**Protein Refseq** [NP\\_112600](#)

**MIM** [607647](#)

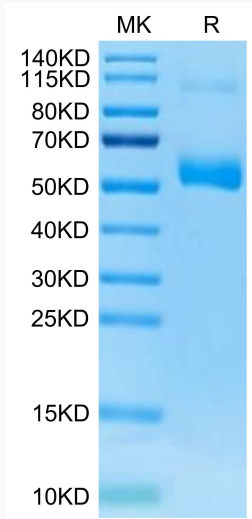
**UniProt ID** [Q9BX97](#)

 Tel: 1-631-559-9269 1-516-512-3133

 Email: [info@creative-biomart.com](mailto:info@creative-biomart.com)  Fax: 1-631-938-8127

 45-1 Ramsey Road, Shirley, NY 11967, USA

**Tris-Bis PAGE**



 Tel: 1-631-559-9269 1-516-512-3133

 Email: [info@creative-biomart.com](mailto:info@creative-biomart.com)  Fax: 1-631-938-8127

 45-1 Ramsey Road, Shirley, NY 11967, USA