

Recombinant Human PLVAP Protein, Myc/DDK-tagged, C13 and N15-labeled

Cat. No. PLVAP-2618H Lot. No. (See product label)

SPECIFICATION

Product Overview	PLVAP MS Standard C13 and N15-labeled recombinant protein (NP_112600) with a C-terminal MYC/DDK tag, was expressed in HEK293 cells.
Species	Human
Source	HEK293
Description	Endothelial cell-specific membrane protein involved in the formation of the diaphragms that bridge endothelial fenestrae. It is also required for the formation of stomata of caveolae and transendothelial channels. Functions in microvascular permeability, endothelial fenestrae contributing to the passage of water and solutes and regulating transcellular versus paracellular flow in different organs. Plays a specific role in embryonic development.
Molecular Mass	50.4 kDa
AA Sequence	MGLAMEHGGSYARAGGSSRGCWYYLRYFFLFVSLIQFLIILGLVLFMVYGNVHVSTE SNLQATERRAEGLYSLLGLTASQSNLTKELNFTTRAKDAIMQMWLNARRDLDRINA SFRQCQGDRVIYTNNQRYMAAIIILSEKQCRDQFKDMNKSCDALLFMLNQKVKTLEV EIAKEKTICTKDKEVLLNKRVAEEQLVECVKTRRELQHQERQLAKEQLQKVQALCLPL DKDKFEMDLRNLWRDSIIPRSLDNLGYNLYHPLGSELASIRRACDHMPSLMSSKVEE LARSLRADIERVARENSDLQRQKLEAQQGLRASQEAKQKVEKEAQAREAKLQAECS RQTQLALEEKAVLRKERDNLAKELEEKKREAEQLRMELAIRNSALDTCIKTKSQPMM

Tel: 1-631-559-9269 1-516-512-3133

Email: info@creative-biomart.com Fax: 1-631-938-8127

45-1 Ramsey Road, Shirley, NY 11967, USA

PVSRPMGPVPNPQPIDPASLEEFKRKILESQRPPAGIPVAPSSGSGPTRRTRRLEQKLI
SEEDLAANDILDYKDDDDKV

Purity > 80% as determined by SDS-PAGE and Coomassie blue staining

Stability Stable for 3 months from receipt of products under proper storage and handling conditions.

Storage Store at -80 centigrade. Avoid repeated freeze-thaw cycles.

Concentration 50 µg/mL as determined by BCA

Storage Buffer 100 mM glycine, 25 mM Tris-HCl, pH 7.3.

GENE INFORMATION

Gene Name [PLVAP plasmalemma vesicle associated protein \[Homo sapiens \(human\) \]](#)

Official Symbol [PLVAP](#)

Synonyms PLVAP; plasmalemma vesicle associated protein; plasmalemma vesicle-associated protein; FELS; fenestrated endothelial linked structure protein; PV 1 protein; gp68; PV 1; PV1; plasmalemma vesicle protein 1; fenestrated endothelial-linked structure protein; fenestrated-endothelial linked structure protein; PV-1 protein; PV-1;

Gene ID [83483](#)

mRNA Refseq [NM_031310](#)

Protein Refseq [NP_112600](#)

 Tel: 1-631-559-9269 1-516-512-3133

 Email: info@creative-biomart.com  Fax: 1-631-938-8127

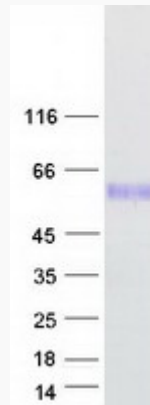
 45-1 Ramsey Road, Shirley, NY 11967, USA



MIM 607647

UniProt ID Q9BX97

SDS-PAGE



Tel: 1-631-559-9269 1-516-512-3133

Email: info@creative-biomart.com Fax: 1-631-938-8127

45-1 Ramsey Road, Shirley, NY 11967, USA