

Recombinant Human PLVAP Protein, His-tagged

Cat. No. PLVAP-745H Lot. No. (See product label)

SPECIFICATION

Product Overview	Recombinant Human PLVAP(Arg123~Lys393) fused with His tag at N-terminal was expressed in E. coli.
Species	Human
Source	E.coli
ProteinLength	Arg123~Lys393
Form	PBS, pH7.4, containing 0.01% SKL, 1mM DTT, 5% Trehalose and Proclin300.
Molecular Mass	35.2kDa
Endotoxin	<1.0EU per 1g (determined by the LAL method)
Purity	> 97%
Applications	Positive Control; Immunogen; SDS-PAGE; WB. If bio-activity of the protein is needed, please check active protein.
Stability	The thermal stability is described by the loss rate. The loss rate was determined by accelerated thermal degradation test, that is, incubate the protein at 37 centigrade for 48h, and no obvious degradation and precipitation were observed. The loss rate is less than 5% within the expiration date under appropriate storage condition.

 Tel: 1-631-559-9269 1-516-512-3133

 Email: info@creative-biomart.com  Fax: 1-631-938-8127

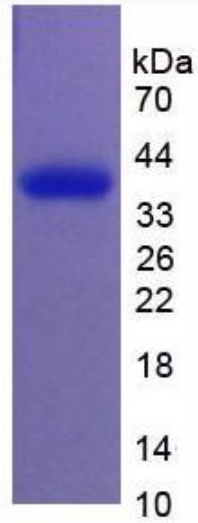
 45-1 Ramsey Road, Shirley, NY 11967, USA

Storage	Avoid repeated freeze/thaw cycles. Store at 2-8 centigrade for one month. Aliquot and store at -80 centigrade for 12 months.
Reconstitution	20mM Tris, 150mM NaCl, pH8.0, containing 1mM EDTA, 1mM DTT, 0.01% SKL, 5% Trehalose and Proclin300.
GENE INFORMATION	
Gene Name	PLVAP plasmalemma vesicle associated protein [Homo sapiens]
Official Symbol	PLVAP
Synonyms	PLVAP; plasmalemma vesicle associated protein; plasmalemma vesicle-associated protein; FELS; fenestrated endothelial linked structure protein; PV 1 protein; gp68; PV 1; PV1; plasmalemma vesicle protein 1; fenestrated endothelial-linked structure protein; fenestrated-endothelial linked structure protein; PV-1 protein; PV-1;
Gene ID	83483
mRNA Refseq	NM_031310
Protein Refseq	NP_112600
MIM	607647
UniProt ID	Q9BX97

 Tel: 1-631-559-9269 1-516-512-3133

 Email: info@creative-biomart.com  Fax: 1-631-938-8127

 45-1 Ramsey Road, Shirley, NY 11967, USA



 Tel: 1-631-559-9269 1-516-512-3133

 Email: info@creative-biomart.com  Fax: 1-631-938-8127

 45-1 Ramsey Road, Shirley, NY 11967, USA