

# Recombinant Mouse PLXDC1 Protein (20-426 aa), His-tagged

Cat. No. PLXDC1-2400M Lot. No. (See product label)

## SPECIFICATION

**Product Overview** Recombinant Mouse PLXDC1 Protein (20-426 aa) is produced by Yeast expression system. This protein is fused with a 6xHis tag at the N-terminal. Research Area: Cardiovascular. Protein Description: Partial.

**Species** Mouse

**Source** Yeast

**ProteinLength** 20-426 aa

**Description** Plays a critical role in endothelial cell capillary morphogenesis.

**Form** Tris-based buffer, 50% glycerol

**Molecular Mass** 47.3 kDa

**AA Sequence**

```
LSPATPAGHNEGQDSAWTAKRTRQGWSRRPRESPAQVLKPGKTQLSQDLGGGSL
AIDTLPDNRTRVVEDNHNYYVSRVYGPGEKQSQDLWVDLAVANRSHVKIHRILSSSH
RQASRVVLSFDFPFYGHPLRQITIATGGFIFMGDMLHRMLTATQYVAPLMANFNPGY
SDNSTVAYFDNGTVFVVQWDHVYLQDREDRGSFTFQAALHRDGRIVFGYKEIPMAV
LDISSAQHPVKAGLSDAFAMILNSSPEVPASQRRTIFEYHRVELDSSKITTTSAVEFTPL
PTCLQHQCSDTCVSSNLTFNCVSWCHVLQRCSSGFDRYRQEWLTYGCAQEAEGKT
CEDFQDDSHYSASPDSSFSPFNGDSTTSSSLFIDSLTTEDDTKLNPYAEGDGLPDHS
SPKSKGPPVHLGT
```

 Tel: 1-631-559-9269 1-516-512-3133

 Email: [info@creative-biomart.com](mailto:info@creative-biomart.com)  Fax: 1-631-938-8127

 45-1 Ramsey Road, Shirley, NY 11967, USA

<b>Purity</b>	> 90% as determined by SDS-PAGE.
<b>Notes</b>	Repeated freezing and thawing is not recommended. Store working aliquots at 4 centigrade for up to one week.
<b>Storage</b>	The shelf life is related to many factors, storage state, buffer ingredients, storage temperature and the stability of the protein itself. Generally, the shelf life of liquid form is 6 months at -20 centigrade/-80 centigrade. The shelf life of lyophilized form is 12 months at -20 centigrade/-80 centigrade.
<b>Concentration</b>	A hardcopy of COA will be sent along with the products. Please refer to it for detailed information.

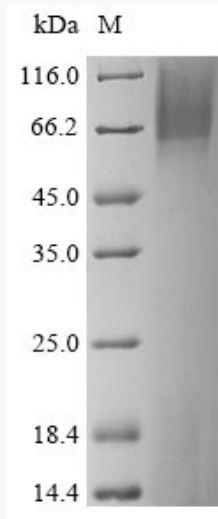
## GENE INFORMATION

<b>Gene Name</b>	Plxdc1 plexin domain containing 1 [ <i>Mus musculus</i> ]
<b>Official Symbol</b>	PLXDC1
<b>Synonyms</b>	PLXDC1; plexin domain containing 1; TEM7 related; Tem7; AI848450; 2410003I07Rik; MGC130377;
<b>Gene ID</b>	72324
<b>mRNA Refseq</b>	NM_001163608
<b>Protein Refseq</b>	NP_001157080
<b>UniProt ID</b>	Q91ZV7

 Tel: 1-631-559-9269 1-516-512-3133

 Email: [info@creative-biomart.com](mailto:info@creative-biomart.com)  Fax: 1-631-938-8127

 45-1 Ramsey Road, Shirley, NY 11967, USA



(Tris-Glycine gel) Discontinuous SDS-PAGE (reduced) with 5% enrichment gel and 15% separation gel.

Tel: 1-631-559-9269 1-516-512-3133

Email: [info@creative-biomart.com](mailto:info@creative-biomart.com) Fax: 1-631-938-8127

45-1 Ramsey Road, Shirley, NY 11967, USA