

Recombinant Human PLXDC1 Protein, His-tagged

Cat. No. PLXDC1-5034H Lot. No. (See product label)

SPECIFICATION

Product Overview	Recombinant Human PLXDC1 protein(Leu19-Thr426), fused with C-terminal His tag, was expressed in HEK293.
Species	Human
Source	HEK293
ProteinLength	Leu19-Thr426
Tag	C-His
Form	Liquid in sterile PBS, pH7.4.
Molecular Mass	The protein has a calculated MW of 47 kDa.
Endotoxin	<1.0EU per 1µg (determined by the LAL method).
Purity	> 90 % as determined by SDS-PAGE.
Storage	Store it under sterile conditions at -20 to -80°C. It is recommended that the protein be aliquoted for optimal storage. Avoid repeated freeze-thaw cycles.
Concentration	1.0 mg/ml. Centrifuge the vial at 4°C before opening to recover the entire contents.
Reconstitution	It is recommended that sterile water be added to the vial to prepare a stock solution of

 Tel: 1-631-559-9269 1-516-512-3133

 Email: info@creative-biomart.com  Fax: 1-631-938-8127

 45-1 Ramsey Road, Shirley, NY 11967, USA

0.2 ug/ul. Centrifuge the vial at 4°C before opening to recover the entire contents.

AA Sequence

LSPQPGAGHDEGPGSGWAAKGTVRGWNRRARESPGHVSEPDRDRTQLSQDLGGGT
 LAMDTLPDNRTRVVEDNHSYYVSRLYGPSEPHSRELWVDVAEANRSQVKIHTILSNT
 HRQASRVVLSFDFPFYGHPLRQITIATGGFIFMGDVIHRMLTATQYVAPLMANFNPG
 YSDNSTVVYFDNGTVFVVQWDHVYLGQWEDKGSFTFQAALHHDGRIVFAYKEIPMS
 VPEISSSQHPVKTGLSDAFMILNPSPDVPESSRRRSIFEYHRIELDPSKVTSMASAVEFT
 PLPTCLQHRSCDACMSSDLTFNCSWCHVLQRCSSGFDYRQEWMDYGCAQEAEG
 RMCEDFQDEDHDSASPDTSFSPYDGDLTSSSLFIDSLTTEDDTKLNPHYAGGDGL
 QNNLSPKTKGTPVHLGTAHHHHHHHHHHH

GENE INFORMATION

Gene Name [PLXDC1 plexin domain containing 1 \[Homo sapiens \]](#)

Official Symbol [PLXDC1](#)

Synonyms [PLXDC1](#); plexin domain containing 1; plexin domain-containing protein 1; TEM3; TEM7; tumor endothelial marker 7 precursor; 2410003I07Rik; tumor endothelial marker 3; tumor endothelial marker 7; FLJ36270; FLJ45632; DKFZp686F0937;

Gene ID [57125](#)

mRNA Refseq [NM_020405](#)

Protein Refseq [NP_065138](#)

MIM [606826](#)

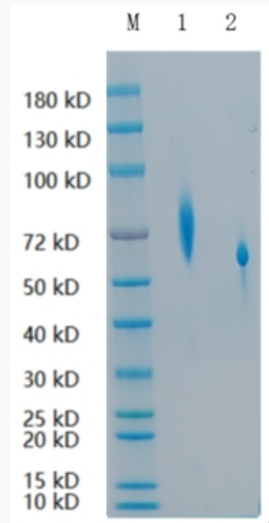
UniProt ID [Q8IUUK5](#)

 Tel: 1-631-559-9269 1-516-512-3133

 Email: info@creative-biomart.com  Fax: 1-631-938-8127

 45-1 Ramsey Road, Shirley, NY 11967, USA

SDS-PAGE



Lane 1: PLXDC1-5034H; Lane 2: BSA

 Tel: 1-631-559-9269 1-516-512-3133

 Email: info@creative-biomart.com  Fax: 1-631-938-8127

 45-1 Ramsey Road, Shirley, NY 11967, USA