

# Recombinant Full Length Human PLXDC1 Protein, C-Flag-tagged

**Cat. No.** PLXDC1-874HFL    **Lot. No.** (See product label)

## SPECIFICATION

### Product Overview

Recombinant Full Length Human PLXDC1 Protein, fused to Flag-tag at C-terminus, was expressed in Mammalian cells.

### Species

Human

### Source

Mammalian Cells

### Description

Predicted to be involved in angiogenesis and spinal cord development. Part of receptor complex.

### Form

25 mM Tris HCl, pH 7.3, 100 mM glycine, 10% glycerol.

### Molecular Mass

55.6 kDa

### AA Sequence

MRGELWLLVLLVLR AARALSPQPGAGHDEGPGSGWAAKGTVRGWNRRARESPGH  
VSEPDRTQLSQDLGGG TLAMDTLPDNRTRVVEDNHSYYVSRLYGPSEPHSRELWV  
DVAEANRSQVKIHTILSNTHRQASRVVLSFD FPFYGHPLRQITMATGGFIFMGDVIH  
RMLTATQYVAPLMANFNPGYSNDSTVVYFDNGTVFVQWDHVYL QGWEDKGSFT  
FQAALHHDGRIVFAYKEIPMSVPEISSSQHPVKTGLSDAFMILNPSPDVPESSRRRSIF  
EY HRIELDPSKVTSM SAVEFTPLPTCLQHRSCDACMSSDLTFNCSWCHVLQRCSS  
GFDRYRQEWMDYGCAQE AEGRMCEDFQDEDHDSASPDTSFSPYDGDLTSSSSL  
FIDSLTTEDDTKLN PYAGGDGLQNNLSPKTKGT PVHLGTIVGIVLAVLLVAAILAGIYI  
NGHPTSNAALFFIERRPHHPAMKFRSHPDHSTYAEVEPSGHE  
KEGFMEAEQCTRTRPLEQKLI SEEDLAANDILDYKDDDDKV

 Tel: 1-631-559-9269    1-516-512-3133

 Email: [info@creative-biomart.com](mailto:info@creative-biomart.com)     Fax: 1-631-938-8127

 45-1 Ramsey Road, Shirley, NY 11967, USA

<b>Purity</b>	> 80% as determined by SDS-PAGE and Coomassie blue staining.
<b>Stability</b>	Stable for 12 months from the date of receipt of the product under proper storage and handling conditions. Avoid repeated freeze-thaw cycles.
<b>Storage</b>	Store at -80 centigrade.
<b>Concentration</b>	>50 ug/mL as determined by microplate BCA method.
<b>Preparation</b>	Recombinant protein was captured through anti-DDK affinity column followed by conventional chromatography steps.
<b>Protein Families</b>	Druggable Genome, Secreted Protein, Transmembrane
<b>Full Length</b>	Full L.

## GENE INFORMATION

<b>Gene Name</b>	PLXDC1 plexin domain containing 1 [ Homo sapiens (human) ]
<b>Official Symbol</b>	PLXDC1
<b>Synonyms</b>	TEM3; TEM7
<b>Gene ID</b>	57125
<b>mRNA Refseq</b>	NM_020405.5
<b>Protein Refseq</b>	NP_065138.2
<b>MIM</b>	606826

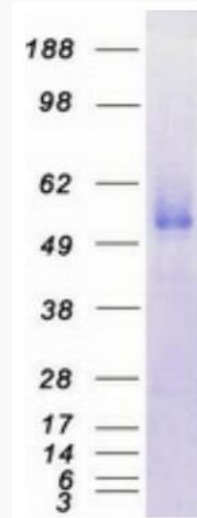
 Tel: 1-631-559-9269 1-516-512-3133

 Email: [info@creative-biomart.com](mailto:info@creative-biomart.com)  Fax: 1-631-938-8127

 45-1 Ramsey Road, Shirley, NY 11967, USA

UniProt ID

Q8IUK5



Coomassie blue staining of purified PLXDC1 protein.

 Tel: 1-631-559-9269 1-516-512-3133

 Email: [info@creative-biomart.com](mailto:info@creative-biomart.com)  Fax: 1-631-938-8127

 45-1 Ramsey Road, Shirley, NY 11967, USA