

Recombinant Full Length Human PLXNA1 Protein, C-Flag-tagged

Cat. No. PLXNA1-1329HFL **Lot. No.** (See product label)

SPECIFICATION

Product Overview	Recombinant Full Length Human PLXNA1 Protein, fused to Flag-tag at C-terminus, was expressed in Mammalian cells.
Species	Human
Source	Mammalian Cells
Description	Predicted to enable semaphorin receptor activity. Predicted to be involved in several processes, including generation of neurons; regulation of GTPase activity; and regulation of cell shape. Predicted to act upstream of or within dichotomous subdivision of terminal units involved in salivary gland branching; neuron projection morphogenesis; and regulation of smooth muscle cell migration. Located in cytosol and nucleoplasm.
Form	25 mM Tris HCl, pH 7.3, 100 mM glycine, 10% glycerol.
Molecular Mass	210.9 kDa
AA Sequence	MPLPPRSLQVLLLLLLLLLLLLPGMWAEAGLPRAGGGSQPPFRTFSASDWGLTHLVV HEQTGEVYVGAVNR IYKLSGNLTLLRAHVTPVEDNEKCYPPPSVQSCPHGLGSTD NVNKLKLLLDYAANRLLACGSASQGICQF LRLDDLFLKLGEPHHRKEHYLSSVQEAGS MAGVLIAGPPGQGQAKLFGVGTIDGKSEYFPTLSSRRLMANE EDADMFGFVYQDEF VSSQLKIPSDTLSKFPAPFDIYYVYSFRSEQFVYYLTLQLDTQLTSPDAAGEHFFTS KI VRLCVDDPKPFYSYVEFFPIGCEQAGVEYRLVQDAYLSRPGRALAHQLGLAEDEDVLF

 Tel: 1-631-559-9269 1-516-512-3133

 Email: info@creative-biomart.com  Fax: 1-631-938-8127

 45-1 Ramsey Road, Shirley, NY 11967, USA



TVFAQGQKNRVK PPKESALCLFTLRRAIKEKIKERIQSCYRGEKLSLPWLLNKELGCI
NSPLQIDDDFCGQDFNQPLGGTVT IEGTPLFVDKDDGLTAVAAYDYRGRVTVFAGT
RSGRIRKILVDLSNPGGRPALAYESVVAQEGSPILRDL VLSPNHQYLYAMTEKQVTR
VPVESCQYTSCELCLGSRDPHCGWCVLHSICSRDACERADEPQRFAADL LQCV
QLTVQPRNVSVTMSQVPLVLQAWNVPDLSAGVNCSFEDFTESESVLEDGRIHCRSP
SAREVAPITR GQGQQRVVKLYLKSSETGKKFASVDFVFYNCVHQSCLSCVNGSFP
CHWCKYRHVCTHNVADCAFLEGRV NVSEDCPQILPSTQIYVPVGVVVKPITLAARNL
PQPQSGQRGYECLFHIPGSPARVTALRFNSSLQCQNS SYSYEGNDVSDLPVNLS
VWVWNGNFVIDNPQNIQAHLKCPALRESCGLCLKADPRFECGWCVAERRCSLR HH
CAADTPASWMHARHGSSRCTDPKILKLSPETGPRQGGTRLTITGENLGLRFEDVRL
GVRVGKVLCSVP ESEYISAEQIVCEIGDASSVRAHDALVEVCVRDCSPHYRALSPKR
FTFVTPTFYRVSPSRGPLSGGTWIG IEGSHLNAGSDVAVSVGGRPCSFVSWRNSREI
RCLTPPGQSPGSAPIIININRAQLTNPEVKYNYTEDPTI LRIDPEWSINSGGTLTITVTG
TNLATVREPRIRAKYGGIERENGCLVYNDTTMVCRAPSVANPVRSPPELG ERPDEL
GFVMDNVRSLLVLNSTSFLLYYPDPVLEPLSPTGLLELKPSSPLILKGRNLLPPAPGNS
RLNYTV LIGSTPCTLTVSETQLLCEAPNLTGQHKVTVRAGGFVSPGTLQVYSDSLL
TLPAIVGIGGGGGGLLLLVI VAVLIAKPKSRDADRTLKRLQLQMDNLESRVALECKEA
FAELQTDIHELTDLDGAGIPFLDYRTYAMR VLFPGIEDHPVLKEMEVQANVEKSLTL
FGQLLTKKHFLFTFIRTLAQRSFSMRDRGNVASLIMTALQGE MEYATGVKQLLSD
LIEKNLESKNHPKLLLRRTESVAEKMLTNWFTFLLYKFLKECAGEPLFMLYCAIKQ Q
MEKGPIDAITGEARYSLSEDKLIRQQIDYKTLTLNVCVNPENENAPEVPVKGLDCDTVT
QAKEKLLDAAY KGVYPYSQRPKAADMLEWRQGRMARIILQDEDEVTTKIDNDWKRL
NTLAHYQVTDGSSVALVPKQTSAYNI SNSSTFTKLSRYESMLRTASSPDSLRSRTP
MITPDLESGTKLWHLVKNHHDLDQREGDRGSKMVSEIYL TRLLATKGTQKQFVDDL
FETIFSTAHRGSALPLAIKYMFDLDEQADKHQIHDADV RHTWKSNCPLRFW VNVI
KNPQFVFDIHKNSITDACLSVAQTFMDCSSTSEHKLKGDSPSNKLLYAKDIPNYKS
WVERYADI AKMPAISDQDMSAYLAEQSRLHLSQFNSMSALHEIYSYITKYKDEILAA
LEKDEQARRQRLRSKLEQVVD
TMALSSTRTRPLEQKLISEEDLAANDILDYKDDDDKV

Tel: 1-631-559-9269 1-516-512-3133

Email: info@creative-biomart.com Fax: 1-631-938-8127

45-1 Ramsey Road, Shirley, NY 11967, USA

Purity	> 80% as determined by SDS-PAGE and Coomassie blue staining.
Stability	Stable for 12 months from the date of receipt of the product under proper storage and handling conditions. Avoid repeated freeze-thaw cycles.
Storage	Store at -80 centigrade.
Concentration	>50 ug/mL as determined by microplate BCA method.
Preparation	Recombinant protein was captured through anti-DDK affinity column followed by conventional chromatography steps.
Protein Families	Druggable Genome, Transmembrane
Protein Pathways	Axon guidance
Full Length	Full L.

GENE INFORMATION

Gene Name	PLXNA1 plexin A1 [Homo sapiens (human)]
Official Symbol	PLXNA1
Synonyms	NOV; NOV P; PLXN1; DWOPNED; PLEXIN-A1
Gene ID	5361
mRNA Refseq	NM_032242.4
Protein Refseq	NP_115618.3

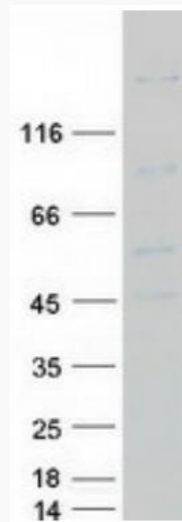
 Tel: 1-631-559-9269 1-516-512-3133

 Email: info@creative-biomart.com  Fax: 1-631-938-8127

 45-1 Ramsey Road, Shirley, NY 11967, USA

MIM 601055

UniProt ID Q9UIW2



Coomassie blue staining of purified PLXNA1 protein.

 Tel: 1-631-559-9269 1-516-512-3133

 Email: info@creative-biomart.com  Fax: 1-631-938-8127

 45-1 Ramsey Road, Shirley, NY 11967, USA