

Recombinant Human PLXNA1 Protein, MYC/DDK-tagged

Cat. No. PLXNA1-509H **Lot. No.** (See product label)

SPECIFICATION

Product Overview	Recombinant Human PLXNA1 fused with MYC/DDK tag at C-terminal was expressed in HEK293.
Species	Human
Source	HEK293
Description	This gene encodes a member of the UDP-N-acetyl-alpha-D-galactosamine:polypeptide N-acetylgalactosaminyltransferase (GalNAc-T) family of enzymes. GalNAc-Ts initiate mucin-type O-linked glycosylation in the Golgi apparatus by catalyzing the transfer of GalNAc to serine and threonine residues on target proteins. They are characterized by an N-terminal transmembrane domain, a stem region, a luminal catalytic domain containing a GT1 motif and Gal/GalNAc transferase motif, and a C-terminal ricin/lectin-like domain. GalNAc-Ts have different, but overlapping, substrate specificities and patterns of expression. The encoded protein is capable of glycosylating fibronectin peptide in vitro and is expressed in a fibroblast cell line, indicating that it may be involved in the synthesis of oncofetal fibronectin.
Form	25 mM Tris.HCl, pH 7.3, 100 mM glycine, 10% glycerol.
Molecular Mass	210.9 kDa
Purity	> 80% as determined by SDS-PAGE and Coomassie blue staining
Notes	Recombinant protein was captured through anti-DDK affinity column followed by

 Tel: 1-631-559-9269 1-516-512-3133

 Email: info@creative-biomart.com  Fax: 1-631-938-8127

 45-1 Ramsey Road, Shirley, NY 11967, USA

conventional chromatography steps.

Concentration >50 ug/mL as determined by microplate BCA method

GENE INFORMATION

Gene Name [PLXNA1 plexin A1 \[Homo sapiens \]](#)

Official Symbol [PLXNA1](#)

Synonyms [PLXNA1](#); [plexin A1](#); [PLXN1](#); [plexin-A1](#); [NOV](#); [plexin 1](#); [semaphorin receptor NOV](#); [NOVP](#); [PLEXIN-A1](#); [DKFZp761P19121](#);

Gene ID [5361](#)

mRNA Refseq [NM_032242](#)

Protein Refseq [NP_115618](#)

MIM [601055](#)

UniProt ID [Q9UIW2](#)

 Tel: 1-631-559-9269 1-516-512-3133

 Email: info@creative-biomart.com  Fax: 1-631-938-8127

 45-1 Ramsey Road, Shirley, NY 11967, USA



116

66

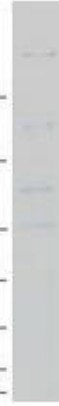
45

35

25

18

14



Tel: 1-631-559-9269 1-516-512-3133

Email: info@creative-biomart.com Fax: 1-631-938-8127

45-1 Ramsey Road, Shirley, NY 11967, USA