

Recombinant Human PLXNB1 Protein, His tagged

Cat. No. PLXNB1-001H Lot. No. (See product label)

SPECIFICATION

Product Overview	Recombinant Human PLXNB1 Protein (35-150 aa) with His tag was expressed in E. coli.
Species	Human
Source	E.coli
ProteinLength	35-150 aa
Description	Enables semaphorin receptor activity. Involved in several processes, including negative regulation of cell adhesion; regulation of cell shape; and semaphorin-plexin signaling pathway. Located in plasma membrane. Part of semaphorin receptor complex.
Molecular Mass	14 kDa
Purity	> 90% by SDS-PAGE
AA Sequence	MLQHLARDPTSGTLYLGATNFLFQLSPGLQLEATVSTGPVLDSRDCLPPVMPDECP QAQPTNPNQLLLVSFGALVVCVSVHQQGVCEQRRRLGQLEQLLLRPERPGDTQYVA ANDPAVHHHHHHHHH
Endotoxin	< 1.0 EU/μg by LAL
Storage	Store it under sterile conditions at -20 to -80 centigrade. It is recommended that the

 Tel: 1-631-559-9269 1-516-512-3133

 Email: info@creative-biomart.com  Fax: 1-631-938-8127

 45-1 Ramsey Road, Shirley, NY 11967, USA

protein be aliquoted for optimal storage. Avoid repeated freeze-thaw cycles.

Storage Buffer Sterile PBS, pH8.2, 8% Trehalose, 10% Glycerol

Concentration 1 mg/mL by BCA

GENE INFORMATION

Gene Name [PLXNB1 plexin B1 \[Homo sapiens \(human\) \]](#)

Official Symbol [PLXNB1](#)

Synonyms [PLXNB1](#); [plexin B1](#); [PLXN5](#); [plexin-B1](#); [KIAA0407](#); [SEP](#); [plexin 5](#); [semaphorin receptor SEP](#); [PLEXIN-B1](#); [MGC149167](#)

Gene ID [5364](#)

mRNA Refseq [NM_001130082](#)

Protein Refseq [NP_001123554](#)

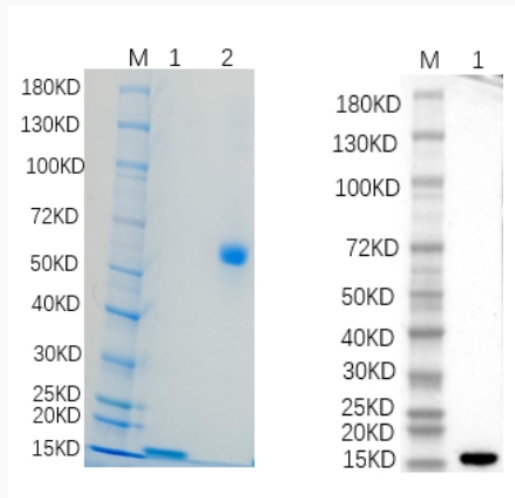
MIM [601053](#)

UniProt ID [O43157](#)

 Tel: 1-631-559-9269 1-516-512-3133

 Email: info@creative-biomart.com  Fax: 1-631-938-8127

 45-1 Ramsey Road, Shirley, NY 11967, USA

SDS-PAGE and WB

Reducing 4%-20% SDS-PAGE (CBB stained) and WB (Anti-His Mouse Monoclonal antibody) analysis profiles of purified PLXNB1. 1. PLXNB1: 1 μ g 2. BSA: 1 μ g

 Tel: 1-631-559-9269 1-516-512-3133

 Email: info@creative-biomart.com  Fax: 1-631-938-8127

 45-1 Ramsey Road, Shirley, NY 11967, USA