

Recombinant Human PLXNB1 Protein, His&GST-tagged

Cat. No. PLXNB1-1953H **Lot. No.** (See product label)

SPECIFICATION

Product Overview	Recombinant Human PLXNB1 Protein (Leu581-Gly727) with N-His&GST tag was expressed in E. coli.
Species	Human
Source	E.coli
ProteinLength	Leu581-Gly727
Description	Enables semaphorin receptor activity. Involved in several processes, including negative regulation of cell adhesion; regulation of cell shape; and semaphorin-plexin signaling pathway. Is integral component of plasma membrane. Part of semaphorin receptor complex.
Form	Freeze-dried powder
Molecular Mass	Predicted Molecular Mass: 45.0 kDa Accurate Molecular Mass: 42 kDa
Purity	> 90%
Applications	Positive Control; Immunogen; SDS-PAGE; WB.
Stability	The thermal stability is described by the loss rate. The loss rate was determined by accelerated thermal degradation test, that is, incubate the protein at 37 centigrade for

 Tel: 1-631-559-9269 1-516-512-3133

 Email: info@creative-biomart.com  Fax: 1-631-938-8127

 45-1 Ramsey Road, Shirley, NY 11967, USA

48h, and no obvious degradation and precipitation were observed. The loss rate is less than 5% within the expiration date under appropriate storage condition.

Storage

Avoid repeated freeze/thaw cycles. Store at 2-8 centigrade for one month. Aliquot and store at -80 centigrade for 12 months.

Storage Buffer

20mM Tris, 150mM NaCl, pH8.0, containing 1mM EDTA, 1mM DTT, 0.01% SKL, 5% Trehalose and Proclin300.

Reconstitution

Reconstitute in 20mM Tris, 150mM NaCl (pH8.0) to a concentration of 0.1-1.0 mg/mL. Do not vortex.

GENE INFORMATION

Gene Name

PLXNB1 plexin B1 [Homo sapiens (human)]

Official Symbol

PLXNB1

Synonyms

PLXNB1; plexin B1; PLXN5; plexin-B1; KIAA0407; SEP; plexin 5; semaphorin receptor SEP; PLEXIN-B1; MGC149167;

Gene ID

5364

mRNA Refseq

NM_001130082

Protein Refseq

NP_001123554

MIM

601053

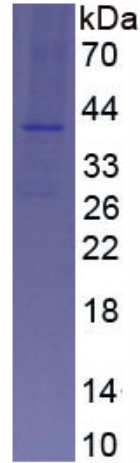
UniProt ID

O43157

 Tel: 1-631-559-9269 1-516-512-3133

 Email: info@creative-biomart.com  Fax: 1-631-938-8127

 45-1 Ramsey Road, Shirley, NY 11967, USA



Tel: 1-631-559-9269 1-516-512-3133

Email: info@creative-biomart.com Fax: 1-631-938-8127

45-1 Ramsey Road, Shirley, NY 11967, USA