

## Recombinant Human PLXNB1 protein, His&Myc-tagged

Cat. No. PLXNB1-7544H Lot. No. (See product label)

### SPECIFICATION

<b>Product Overview</b>	Recombinant Human PLXNB1 protein(O43157)(35-150aa), fused with N-terminal His tag and C-terminal Myc tag, was expressed in E.coli.
<b>Species</b>	Human
<b>Source</b>	E.coli
<b>ProteinLength</b>	35-150a.a.
<b>Tag</b>	His&Myc
<b>Form</b>	If the delivery form is liquid, the default storage buffer is Tris/PBS-based buffer, 5%-50% glycerol. If the delivery form is lyophilized powder, the buffer before lyophilization is Tris/PBS-based buffer, 6% Trehalose, pH 8.0.
<b>Molecular Mass</b>	19.9 kDa
<b>Purity</b>	Greater than 90% as determined by SDS-PAGE.
<b>Storage</b>	Store at -20°C/-80°C upon receipt, aliquoting is necessary for mutiple use. Avoid repeated freeze-thaw cycles.
<b>Reconstitution</b>	We recommend that this vial be briefly centrifuged prior to opening to bring the contents to the bottom. Please reconstitute protein in deionized sterile water to a concentration of 0.1-1.0 mg/mL.We recommend to add 5-50% of glycerol (final

 Tel: 1-631-559-9269 1-516-512-3133

 Email: [info@creative-biomart.com](mailto:info@creative-biomart.com)  Fax: 1-631-938-8127

 45-1 Ramsey Road, Shirley, NY 11967, USA

concentration) and aliquot for long-term storage at -20°C/-80°C.

**AA Sequence**

LQHLARDPTSGTLYLGATNFLFQLSPGLQLEATVSTGPNLDSRDCLPPVMPDECPQ  
 AQPTNPNQLLLSPGALVVCVSVHQQVCEQRRRLGQLEQLLLRPERPGDTQYVAA  
 NDPAV

## GENE INFORMATION

**Gene Name** [PLXNB1 plexin B1 \[ Homo sapiens \]](#)

**Official Symbol** [PLXNB1](#)

**Synonyms** [PLXNB1](#); [plexin B1](#); [PLXN5](#); [plexin-B1](#); [KIAA0407](#); [SEP](#); [plexin 5](#); [semaphorin receptor SEP](#); [PLEXIN-B1](#); [MGC149167](#);

**Gene ID** [5364](#)

**mRNA Refseq** [NM\\_001130082](#)

**Protein Refseq** [NP\\_001123554](#)

**MIM** [601053](#)

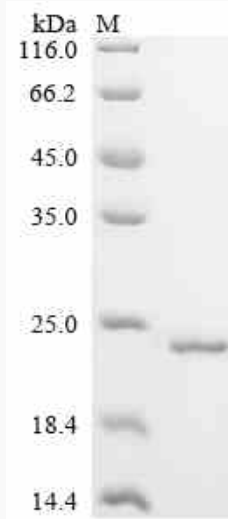
**UniProt ID** [O43157](#)

 Tel: 1-631-559-9269 1-516-512-3133

 Email: [info@creative-biomart.com](mailto:info@creative-biomart.com)  Fax: 1-631-938-8127

 45-1 Ramsey Road, Shirley, NY 11967, USA

**SDS-PAGE**



 Tel: 1-631-559-9269 1-516-512-3133

 Email: [info@creative-biomart.com](mailto:info@creative-biomart.com)  Fax: 1-631-938-8127

 45-1 Ramsey Road, Shirley, NY 11967, USA