

Recombinant Human plexin B2 Protein, His tagged

Cat. No. PLXNB2-025H Lot. No. (See product label)

SPECIFICATION

Product Overview	Recombinant human Plexin B2 protein (O15031) (Leu 20-Pro 1197) with a His tag at the C-terminus was expressed in HEK293.
Species	Human
Source	HEK293
ProteinLength	20-1197aa
Description	<p>Cell surface receptor for SEMA4C, SEMA4D and SEMA4G that plays an important role in cell-cell signaling. Plays a role in glutamatergic synapse development and is required for SEMA4A-mediated excitatory synapse development. Binding to class 4 semaphorins promotes downstream activation of RHOA and phosphorylation of ERBB2 at 'Tyr-1248'. Required for normal differentiation and migration of neuronal cells during brain corticogenesis and for normal embryonic brain development.</p> <p>Regulates the migration of cerebellar granule cells in the developing brain. Plays a role in RHOA activation and subsequent changes of the actin cytoskeleton. Plays a role in axon guidance, invasive growth and cell migration. May modulate the activity of RAC1 and CDC42.</p>
Tag	C-His
Molecular Mass	130.8 kDa
Endotoxin	Less than 1.0 EU/μg by the LAL method.

 Tel: 1-631-559-9269 1-516-512-3133

 Email: info@creative-biomart.com  Fax: 1-631-938-8127

 45-1 Ramsey Road, Shirley, NY 11967, USA

Purity	>95% as determined by SDS-PAGE.
Storage	Please avoid repeated freeze-thaw cycles. Samples are stable for up to twelve months from date of receipt at -20 to -80 centigrade. It is recommended that aliquot the reconstituted solution to minimize freeze-thaw cycles.
Storage Buffer	Lyophilized from a 0.2 µm filtered solution of PBS, pH7.4, 5% Trehalose, 5% mannitol.
Reconstitution	Reconstitute at 250 µg/mL in sterile water.

GENE INFORMATION

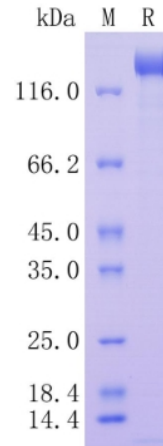
Gene Name	PLXNB2 plexin B2 [Homo sapiens (human)]
Official Symbol	PLXNB2
Synonyms	PLXNB2; plexin B2; plexin-B2; KIAA0315; MM1; PLEXB2; Nbla00445; dJ402G11.3;
Gene ID	23654
mRNA Refseq	NM_012401
Protein Refseq	NP_036533
MIM	604293
UniProt ID	O15031

 Tel: 1-631-559-9269 1-516-512-3133

 Email: info@creative-biomart.com  Fax: 1-631-938-8127

 45-1 Ramsey Road, Shirley, NY 11967, USA

**Protein on SDS-
PAGE under
reducing (R)
condition.**



 Tel: 1-631-559-9269 1-516-512-3133

 Email: info@creative-biomart.com  Fax: 1-631-938-8127

 45-1 Ramsey Road, Shirley, NY 11967, USA