

## Recombinant Human PLXNB2 protein

Cat. No. PLXNB2-7434H Lot. No. (See product label)

### SPECIFICATION

<b>Product Overview</b>	Recombinant Human PLXNB2 protein(O15031)(20-466aa) was expressed in E.coli.
<b>Species</b>	Human
<b>Source</b>	E.coli
<b>ProteinLength</b>	20-466a.a.
<b>Tag</b>	Non
<b>Form</b>	If the delivery form is liquid, the default storage buffer is Tris/PBS-based buffer, 5%-50% glycerol. If the delivery form is lyophilized powder, the buffer before lyophilization is Tris/PBS-based buffer, 6% Trehalose, pH 8.0.
<b>Molecular Mass</b>	48.8 kDa
<b>Purity</b>	Greater than 85% as determined by SDS-PAGE.
<b>Storage</b>	Store at -20°C/-80°C upon receipt, aliquoting is necessary for mutiple use. Avoid repeated freeze-thaw cycles.
<b>Reconstitution</b>	We recommend that this vial be briefly centrifuged prior to opening to bring the contents to the bottom. Please reconstitute protein in deionized sterile water to a concentration of 0.1-1.0 mg/mL.We recommend to add 5-50% of glycerol (final concentration) and aliquot for long-term storage at -20°C/-80°C.

 Tel: 1-631-559-9269 1-516-512-3133

 Email: [info@creative-biomart.com](mailto:info@creative-biomart.com)  Fax: 1-631-938-8127

 45-1 Ramsey Road, Shirley, NY 11967, USA

**AA Sequence**

LRPRKLDFFRSEKELNHLAVDEASGVVYLGAVNALYQLDAKLQLEQQVATGPALDN  
 KKCTPPIEASQCHEAEMTDNVNQLLLDPPRKRLVECGSLFKGICALRALSNISLRLF  
 YEDGSGEKSFVASNDEGVATVGLVSSTGPPGGDRVLFVVGKGNPHDNGIIVSTRLLD  
 RTDSREAFEAYTDHATYKAGYLSTNTQQFVAAFEDGPYVFFVFNQQDKHPARNRTL  
 LARMCREDPNYYSYLEMDLQCRDPDIHAAAFGTCLAASVAAPGSGRVLYAVFSRDS  
 RSSGGPGAGLCLFPLDKVHAKMEANRNACYTGTREARDIFYKPFHGDICGGHAP  
 GSSKSFPCGSEHLPYPLGSRDGLRGTAVLQRGGLNLTAVTVAENNHTVAFLGTSD  
 GRILKVYLTDPDGTSSSEYDSILVEINKRVKRDVLVSGDLGSLYAMTQDKVFRLPV

**GENE INFORMATION**

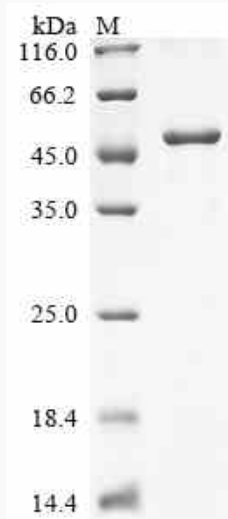
<b>Gene Name</b>	PLXNB2 plexin B2 [ Homo sapiens ]
<b>Official Symbol</b>	PLXNB2
<b>Synonyms</b>	PLXNB2; plexin B2; plexin-B2; KIAA0315; MM1; PLEXB2; Nbla00445; dJ402G11.3;
<b>Gene ID</b>	23654
<b>mRNA Refseq</b>	NM_012401
<b>Protein Refseq</b>	NP_036533
<b>MIM</b>	604293
<b>UniProt ID</b>	O15031

 Tel: 1-631-559-9269 1-516-512-3133

 Email: [info@creative-biomart.com](mailto:info@creative-biomart.com)  Fax: 1-631-938-8127

 45-1 Ramsey Road, Shirley, NY 11967, USA

**SDS-PAGE**



 Tel: 1-631-559-9269 1-516-512-3133

 Email: [info@creative-biomart.com](mailto:info@creative-biomart.com)  Fax: 1-631-938-8127

 45-1 Ramsey Road, Shirley, NY 11967, USA