

Recombinant Human PMEL Protein, Tag Free

Cat. No. PMEL-01H Lot. No. (See product label)

SPECIFICATION

Product Overview	Recombinant human PMEL protein without tag was expressed in E. coli
Species	Human
Source	E.coli
Description	<p>This gene encodes a melanocyte-specific type I transmembrane glycoprotein. The encoded protein is enriched in melanosomes, which are the melanin-producing organelles in melanocytes, and plays an essential role in the structural organization of premelanosomes. This protein is involved in generating internal matrix fibers that define the transition from Stage I to Stage II melanosomes. This protein undergoes a complex pattern of posttranslational processing and modification that is essential to the proper functioning of the protein. A secreted form of this protein that is released by proteolytic ectodomain shedding may be used as a melanoma-specific serum marker. Alternate splicing results in multiple transcript variants.</p>
Molecular Mass	The protein has a calculated MW of 60.5 kDa.
AA Sequence	<p>MGATKVPRNQDWLGVSRQLRTKAWNRQLYPEWTEAQRLLDCWRGGQVSLKVSND GPTLIGANASFSIALNFPQSQKVLDPGQVIWVNNTIINGSQVWGGQPVPYQETDDAC IFPDGGPCPSGSWSQKRSFVYVWKTWQYWQVLGGPVSGLSIGTGRAMLGHTM EVTVYHRRGSRYSYVPLAHSSSAFTITDQVPFSVSVSQLRALDGGNKHFLRNQPLTFA LQLHDPSTGYLAEADLSYTWDFGDSSGTLISRALVVTHTYLEPGPVTAQVVLQAAIPLT SCGSSPVPGTDDGHRPTAEAPNTTAGQVPTTEVVGTTGQAPTAEPSGTTSVQVPT</p>

 Tel: 1-631-559-9269 1-516-512-3133

 Email: info@creative-biomart.com  Fax: 1-631-938-8127

 45-1 Ramsey Road, Shirley, NY 11967, USA

TEVISTAPVQMPTAESTGMTPEKVPVSEVMGTTLAEMSTPEATGMTPAEVSIVVLSG
 TTAAQVTTTEWVETTARELPIPEPEGPDASSIMSTESITGSLGPLLDGTATLRLVKRQ
 VPLDCVLYRYGSFSVTLDIVQGIESAEILQAVPSGEGDAFELTVSCQGGLPKEACMEI
 SSPGCQPPAQRLCQPVLPSACQLVLHQILKGGSGTYCLNVSLADTNSLAVVSTQLI
 MPGQEAG

Purity >90% by SDS-PAGE

Storage Store it under sterile conditions at -20 to -80 centigrade. It is recommended that the protein be aliquoted for optimal storage. Avoid repeated freeze-thaw cycles.

Concentration 1.8 mg/mL

Storage Buffer PBS, pH7.4, 10% glycerol

GENE INFORMATION

Gene Name [PMEL premelanosome protein \[Homo sapiens \(human\) \]](#)

Official Symbol [PMEL](#)

Synonyms PMEL; premelanosome protein; SIL, SILV, silver (mouse homolog) like , silver homolog (mouse); melanocyte protein PMEL; D12S53E; gp100; Pmel17; SI; melanocyte protein mel 17; silver, mouse, homolog of; melanocyte protein Pmel 17; melanosomal matrix protein17; silver locus protein homolog; melanoma-associated ME20 antigen; melanocytes lineage-specific antigen GP100; P1; SIL; ME20; P100; SILV; ME20M; ME20-M; PMEL17;

Gene ID [6490](#)

mRNA Refseq [NM_001200053](#)

 Tel: 1-631-559-9269 1-516-512-3133

 Email: info@creative-biomart.com  Fax: 1-631-938-8127

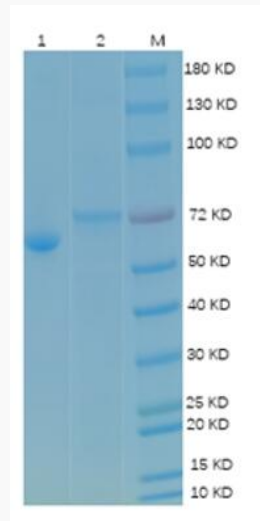
 45-1 Ramsey Road, Shirley, NY 11967, USA

Protein Refseq NP_001186982

MIM 155550

UniProt ID P40967

SDS-PAGE:



Reducing 12% SDS-PAGE analysis profile of purified PMEL

1. BSA
2. PMEL

 Tel: 1-631-559-9269 1-516-512-3133

 Email: info@creative-biomart.com  Fax: 1-631-938-8127

 45-1 Ramsey Road, Shirley, NY 11967, USA