

## Recombinant Human PMEL Protein (25-467 aa), His-tagged

Cat. No. PMEL-1518H Lot. No. (See product label)

### SPECIFICATION

<b>Product Overview</b>	Recombinant Human PMEL Protein (25-467 aa) is produced by Yeast expression system. This protein is fused with a 6xHis tag at the N-terminal. Research Area: Metabolism. Protein Description: Partial.
<b>Species</b>	Human
<b>Source</b>	Yeast
<b>ProteinLength</b>	25-467 aa
<b>Description</b>	Plays a central role in the biogenesis of melanosomes. Involved in the maturation of melanosomes from stage I to II. The transition from stage I melanosomes to stage II melanosomes involves an elongation of the vesicle, and the appearance within of distinct fibrillar structures. Release of the soluble form, ME20-S, could protect tumor cells from antibody mediated immunity.
<b>Form</b>	Tris-based buffer,50% glycerol
<b>Molecular Mass</b>	49.0 kDa
<b>AA Sequence</b>	KVPRNQDWLGVSRQLRTKAWNRQLYPEWTEAQRLLDCWRGGQVSLKVSNDGPTLI GANASFSIALNFPQSQKVLDPDGQVIWVNNTIINGSQVWGGQPVYPQETDDACIFPDG GPCPSGSWSQKRFSVYVWKTWGQYWQVLGGPVSGLSIGTGRAMLGHTMEVTVY HRRGSRSYVPLAHSSSAFTITDQVPFVSVSQRLRALDGGNKHFLRNQPLTFALQLHD PSGYLAEADLSYTWDFGDSSGTLISRALVVTHTYLEPGPVTAQVVLQAAIPLTSCGS

 Tel: 1-631-559-9269 1-516-512-3133

 Email: [info@creative-biomart.com](mailto:info@creative-biomart.com)  Fax: 1-631-938-8127

 45-1 Ramsey Road, Shirley, NY 11967, USA

SPVPGTTDGHRTAEAPNTTAGQVPTTEVVGTTTGGQAPTAEPSTGTTSVQVPTTEVI  
 STAPVQMPTAESTGMTPEKVPVSEVMGTTLAEMSTPEATGMTPAEVSIVVLSGTTA  
 AQVTTTEWVETTARELPIPEPEGPDASSIMSTESITGSLGPLLDGTATLRLV

**Purity** > 90% as determined by SDS-PAGE.

**Notes** Repeated freezing and thawing is not recommended. Store working aliquots at 4 centigrade for up to one week.

**Storage** The shelf life is related to many factors, storage state, buffer ingredients, storage temperature and the stability of the protein itself. Generally, the shelf life of liquid form is 6 months at -20 centigrade/-80 centigrade. The shelf life of lyophilized form is 12 months at -20 centigrade/-80 centigrade.

**Concentration** A hardcopy of COA with reconstitution instruction is sent along with the products.

## GENE INFORMATION

**Gene Name** [PMEL premelanosome protein \[ Homo sapiens \]](#)

**Official Symbol** [PMEL](#)

**Synonyms** PMEL; D12S53E; gp100; Pmel17; SI; P1; SIL; ME20; P100; SILV; ME20M; ME20-M; PMEL17;

**Gene ID** [6490](#)

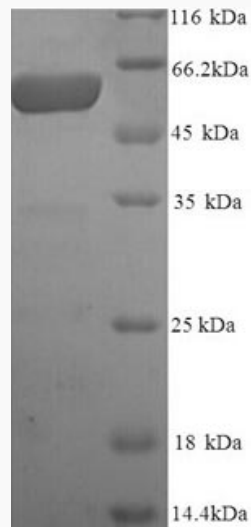
**mRNA Refseq** [NM\\_001200053](#)

**Protein Refseq** [NP\\_001186982](#)

 Tel: 1-631-559-9269 1-516-512-3133

 Email: [info@creative-biomart.com](mailto:info@creative-biomart.com)  Fax: 1-631-938-8127

 45-1 Ramsey Road, Shirley, NY 11967, USA

**MIM** 155550**UniProt ID** P40967

(Tris-Glycine gel) Discontinuous SDS-PAGE (reduced) with 5% enrichment gel and 15% separation gel.

 Tel: 1-631-559-9269 1-516-512-3133 Email: [info@creative-biomart.com](mailto:info@creative-biomart.com)  Fax: 1-631-938-8127 45-1 Ramsey Road, Shirley, NY 11967, USA