

# Recombinant Full Length Human PMEL Protein, C-Flag-tagged

Cat. No. PMEL-835HFL Lot. No. (See product label)

## SPECIFICATION

<b>Product Overview</b>	Recombinant Full Length Human PMEL Protein, fused to Flag-tag at C-terminus, was expressed in Mammalian cells.
<b>Species</b>	Human
<b>Source</b>	Mammalian Cells
<b>Description</b>	This gene encodes a melanocyte-specific type I transmembrane glycoprotein. The encoded protein is enriched in melanosomes, which are the melanin-producing organelles in melanocytes, and plays an essential role in the structural organization of premelanosomes. This protein is involved in generating internal matrix fibers that define the transition from Stage I to Stage II melanosomes. This protein undergoes a complex pattern of posttranslational processing and modification that is essential to the proper functioning of the protein. A secreted form of this protein that is released by proteolytic ectodomain shedding may be used as a melanoma-specific serum marker. Alternate splicing results in multiple transcript variants.
<b>Form</b>	25 mM Tris HCl, pH 7.3, 100 mM glycine, 10% glycerol.
<b>Molecular Mass</b>	70.1 kDa
<b>AA Sequence</b>	MDLVLKRCLLHLAVIGALLAVGATKVP RNQDWLGVSRQLRTKAWNRQLYPEWTEA QRLDCWRGGQVSLKV SNDGPTLIGANASFSIALNFPGSQKVLDPDGQVIWVNNTIING SQVWGGQPVPYQETDDACIFPDGGPCPS GSWSQKR SFVYVWKTWGQYWQVLG GPVSGLSIGTGRAMLGHTHTMEVTVYHRRGSR SYVPLAHSSSAFTIT DQVPFSVSVS

 Tel: 1-631-559-9269 1-516-512-3133

 Email: [info@creative-biomart.com](mailto:info@creative-biomart.com)  Fax: 1-631-938-8127

 45-1 Ramsey Road, Shirley, NY 11967, USA



QLRALDGGNKHFLRNQPLTFALQLHDPSGYLAEADLSYTWDFGDSSGTLISRALVVT  
 HTY LEPGPVTAQVVLQAAIPLTSCGSSPVPGTDDGHRPTAEAPNTTAGQVPTTEVV  
 GTPPGQAPTAEPSGTTS VQVPTTEVISTAPVQMPTAESTGMTPEKVPVSEVMGTTL  
 AEMSTPEATGMTPAEVSIVVLSGTTAAQVTT TEWVETTARELPIPEPEGPDASSIMS  
 TESITGSLGPLLDGTATLRLVKRQVPLDCVLYRYGSFSVTLDIV QGIESAEILQAVPS  
 GEGDAFELTVSCQGGLPKEACMEISSPGCQPPAQRLCQPVLPSPACQLVLHQILKG  
 GSGTYCLNVSLADTNSLAVVSTQLIMPGQEAGLGQVPLIVGILLVLMAVVLASLIYRR  
 RLMKQDFSVPQL  
 PHSSSHWLRLPRIFCSCPIGENSPLLSGQQVTRTRPLEQKLISEEDLAANDILDYKDD  
 DDKV

<b>Purity</b>	> 80% as determined by SDS-PAGE and Coomassie blue staining.
<b>Stability</b>	Stable for 12 months from the date of receipt of the product under proper storage and handling conditions. Avoid repeated freeze-thaw cycles.
<b>Storage</b>	Store at -80 centigrade.
<b>Concentration</b>	>50 ug/mL as determined by microplate BCA method.
<b>Preparation</b>	Recombinant protein was captured through anti-DDK affinity column followed by conventional chromatography steps.
<b>Protein Families</b>	Secreted Protein, Transmembrane
<b>Full Length</b>	Full L.

## GENE INFORMATION

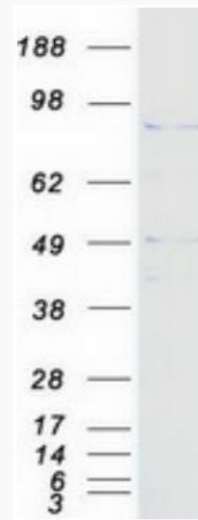
<b>Gene Name</b>	PMEL premelanosome protein [ Homo sapiens (human) ]
------------------	---

Tel: 1-631-559-9269 1-516-512-3133

Email: [info@creative-biomart.com](mailto:info@creative-biomart.com) Fax: 1-631-938-8127

45-1 Ramsey Road, Shirley, NY 11967, USA

<b>Official Symbol</b>	PMEL
<b>Synonyms</b>	P1; SI; SIL; ME20; P100; SILV; HMB45; ME20M; gp100; HMB-45; ME20-M; PMEL17; D12S53E
<b>Gene ID</b>	6490
<b>mRNA Refseq</b>	NM_006928.5
<b>Protein Refseq</b>	NP_008859.1
<b>MIM</b>	155550
<b>UniProt ID</b>	P40967



Coomassie blue staining of purified PMEL protein.

 Tel: 1-631-559-9269 1-516-512-3133

 Email: [info@creative-biomart.com](mailto:info@creative-biomart.com)  Fax: 1-631-938-8127

 45-1 Ramsey Road, Shirley, NY 11967, USA