

Recombinant Human PML Protein, Myc/DDK-tagged, C13 and N15-labeled

Cat. No. PML-1158H **Lot. No.** (See product label)

SPECIFICATION

| | |
|-------------------------|---|
| Product Overview | PML MS Standard C13 and N15-labeled recombinant protein (NP_150242) with a C-terminal MYC/DDK tag, was expressed in HEK293 cells. |
| Species | Human |
| Source | HEK293 |
| Description | The protein encoded by this gene is a member of the tripartite motif (TRIM) family. The TRIM motif includes three zinc-binding domains, a RING, a B-box type 1 and a B-box type 2, and a coiled-coil region. This phosphoprotein localizes to nuclear bodies where it functions as a transcription factor and tumor suppressor. Its expression is cell-cycle related and it regulates the p53 response to oncogenic signals. The gene is often involved in the translocation with the retinoic acid receptor alpha gene associated with acute promyelocytic leukemia (APL). Extensive alternative splicing of this gene results in several variations of the protein's central and C-terminal regions; all variants encode the same N-terminus. Alternatively spliced transcript variants encoding different isoforms have been identified. |
| Molecular Mass | 90.5 kDa |
| AA Sequence | MEPAPARSPRPQQDPARPQEPTMPPPETPSEGRQPSPSPSPTERAPASEEEFQFL RCQQCQAEAKCPKLLPCLHTLCSGCLEASGMQCPICQAPWPLGADTPALDNVFFES LQRRLSVYRQIVDAQAVCTRCKESADFWCFECEQLLCAKCFEAHQWFLKHEARPLA |

 Tel: 1-631-559-9269 1-516-512-3133

 Email: info@creative-biomart.com  Fax: 1-631-938-8127

 45-1 Ramsey Road, Shirley, NY 11967, USA

ELRNQSVREFLDGTRKTNIFCSNPNHRTPTLTSIYCRGCSKPLCCSCALLDSSHSE
 LKCDISAEIQQRQEELDAMTQALQEQDSAFGAVHAQMHAAVGQLGRARAETEELIR
 ERVRQVVAHVRAQERELLEAVDARYQRDYEEEMASRLGRLDAVLQRIRTGSALVQR
 MKCYASDQEVLDMHGFLRQALCRLRQEEPQSLQAAVRTDGFDEFKVRQLDLSSCIT
 QGKDAAVSKKASPEAASTPRDPIDVDLPEEAERVKAQVQALGLAEAQPMVVQSVP
 GAHPVPVYAFSIKGPSYGEDVSNNTTAAQKRKCSQTQCPRKVIKMESEEGKEARLAR
 SSPEQPRPSTSKAVSPPHLDGPPSPRSPVIGSEVFLPNSNHVASGAGEAEERVVIS
 SSEDSDAENSCMEPMETAEPQSSPAHSSPAHSSPAHSSPVQSLLRAQGASSLPCG
 TYHPPAWPPHQPAEQAAATPDAEPHSEPPDHQERPAVHRGIRYLLYRAQRAIRLRHA
 LRLHPQLHRAPIRTWSPHVQASTPAITGPLNHPANAQEHQAQLQRGISPPHRIRGA
 VRSRSRSLRGSSHLSQWLNNFFALPFSSMASQLDMSSVVGAGESRAQTLGAGVPP
 GDSVRGSMEASQVQVPLEASPITFPPPCAPERPPISPVPGARQAGLSGPTRTRRLE
 QKLISEEDLAANDILDYKDDDDKV

Purity > 80% as determined by SDS-PAGE and Coomassie blue staining

Stability Stable for 3 months from receipt of products under proper storage and handling conditions.

Storage Store at -80 centigrade. Avoid repeated freeze-thaw cycles.

Concentration 50 µg/mL as determined by BCA

Storage Buffer 100 mM glycine, 25 mM Tris-HCl, pH 7.3.

GENE INFORMATION

Gene Name [PML promyelocytic leukemia \[Homo sapiens \(human\) \]](#)

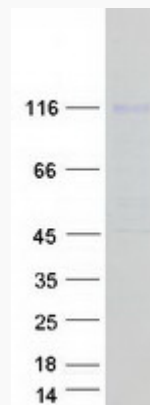
Official Symbol [PML](#)

 Tel: 1-631-559-9269 1-516-512-3133

 Email: info@creative-biomart.com  Fax: 1-631-938-8127

 45-1 Ramsey Road, Shirley, NY 11967, USA

| | |
|-----------------------|---|
| Synonyms | PML; promyelocytic leukemia; protein PML; MYL; RNF71; TRIM19; RING finger protein 71; promyelocytic leukemia protein; tripartite motif protein TRIM19; probable transcription factor PML; promyelocytic leukemia, inducer of; tripartite motif-containing protein 19; PP8675; |
| Gene ID | 5371 |
| mRNA Refseq | NM_033239 |
| Protein Refseq | NP_150242 |
| MIM | 102578 |
| UniProt ID | P29590 |

SDS-PAGE


 Tel: 1-631-559-9269 1-516-512-3133

 Email: info@creative-biomart.com  Fax: 1-631-938-8127

 45-1 Ramsey Road, Shirley, NY 11967, USA